

FIGURE 2A
FMP FLOODWAY NETWORK

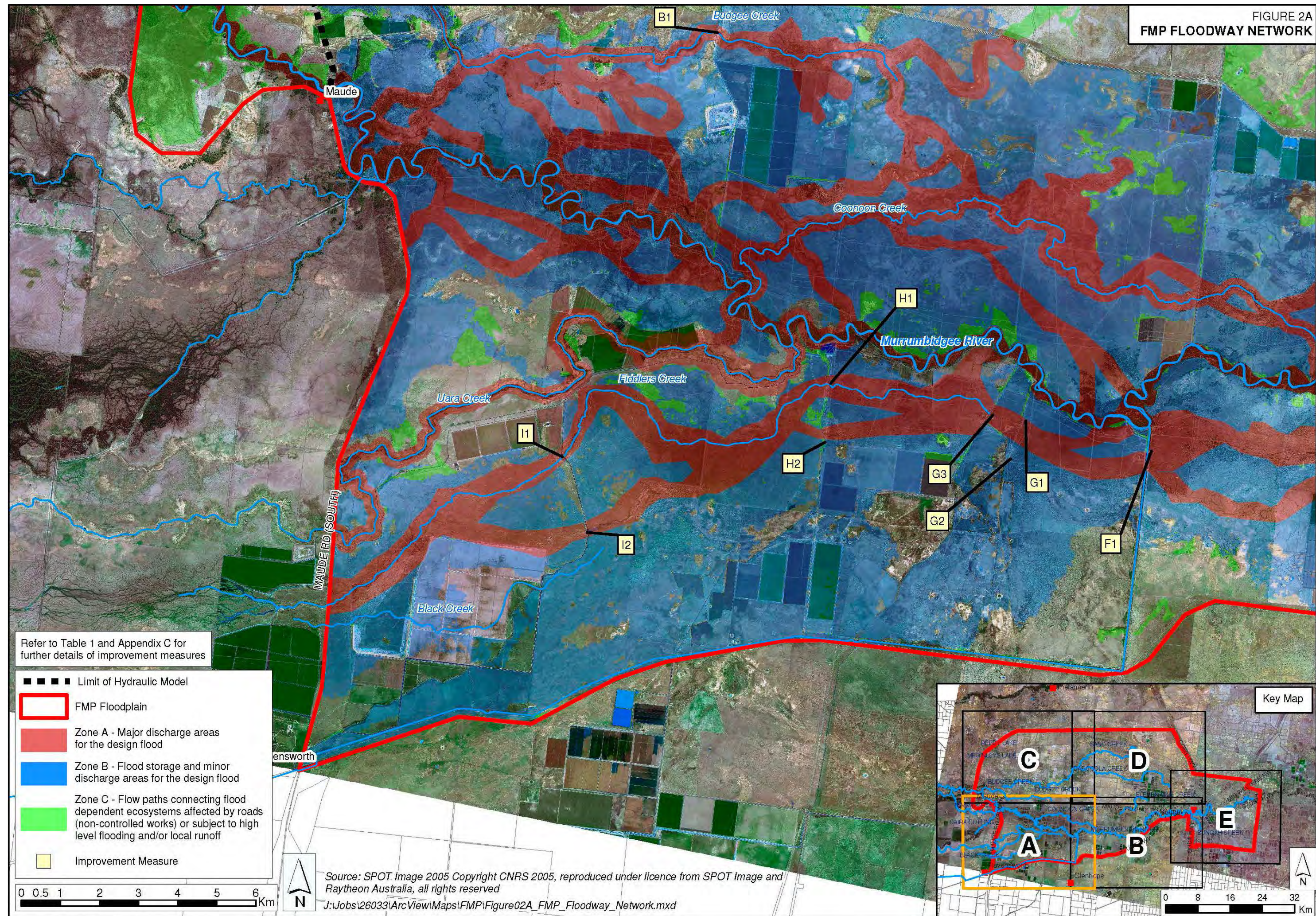
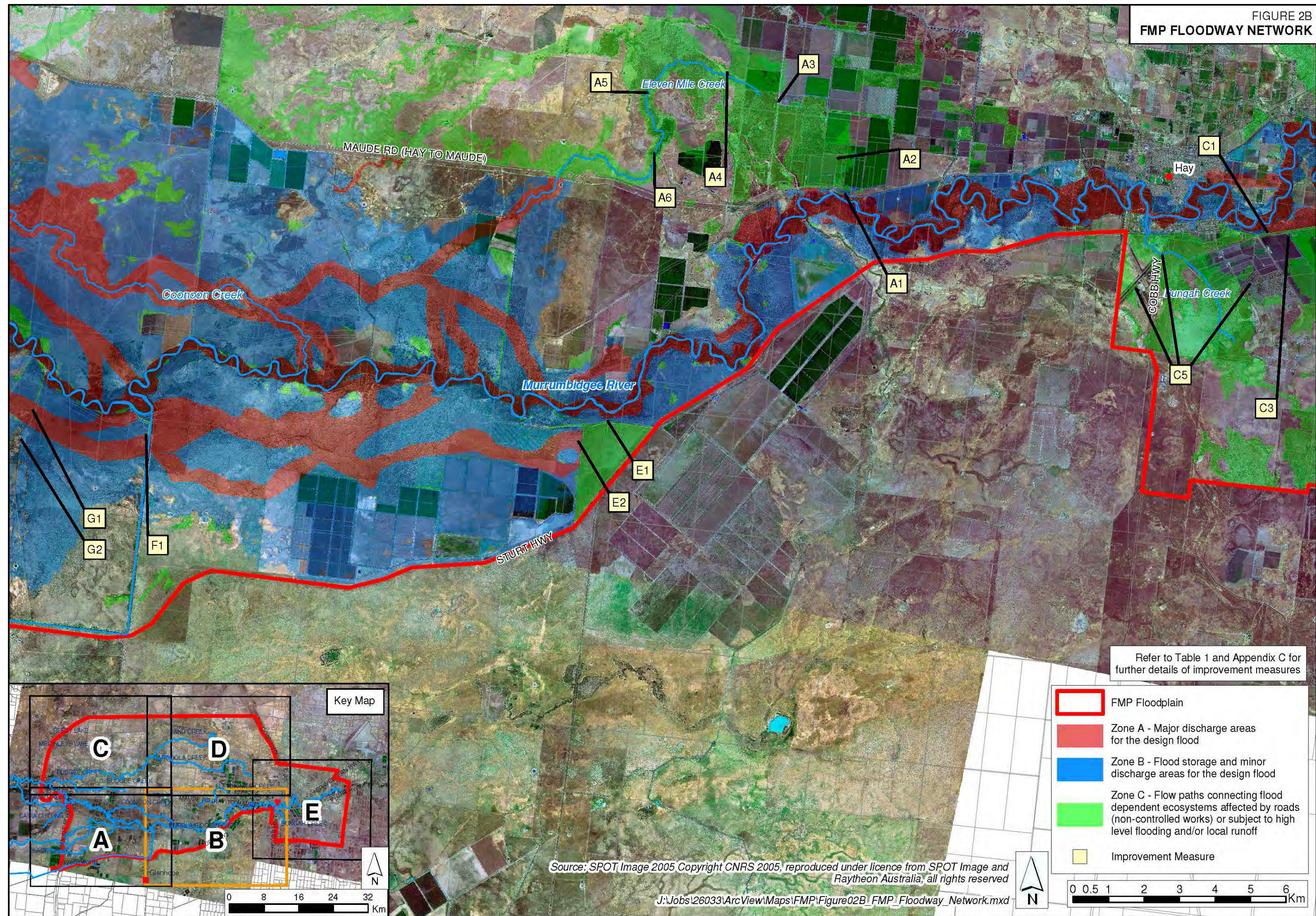
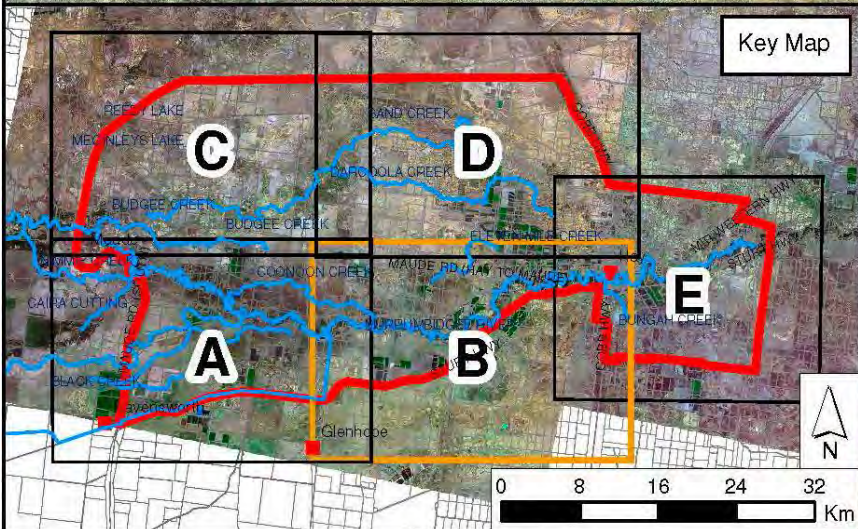


FIGURE 2B
FMP FLOODWAY NETWORK



Refer to Table 1 and Appendix C for further details of improvement measures

- FMP Floodplain
- Zone A - Major discharge areas for the design flood
- Zone B - Flood storage and minor discharge areas for the design flood
- Zone C - Flow paths connecting flood dependent ecosystems affected by roads (non-controlled works) or subject to high level flooding and/or local runoff
- Improvement Measure



Source: SPOT Image 2005 Copyright CNRS 2005, reproduced under licence from SPOT Image and Raytheon Australia, all rights reserved

J:\Jobs\26033\ArcView\Maps\FMP\Figure02B_FMP_Floodway_Network.mxd

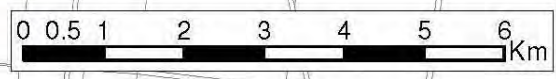
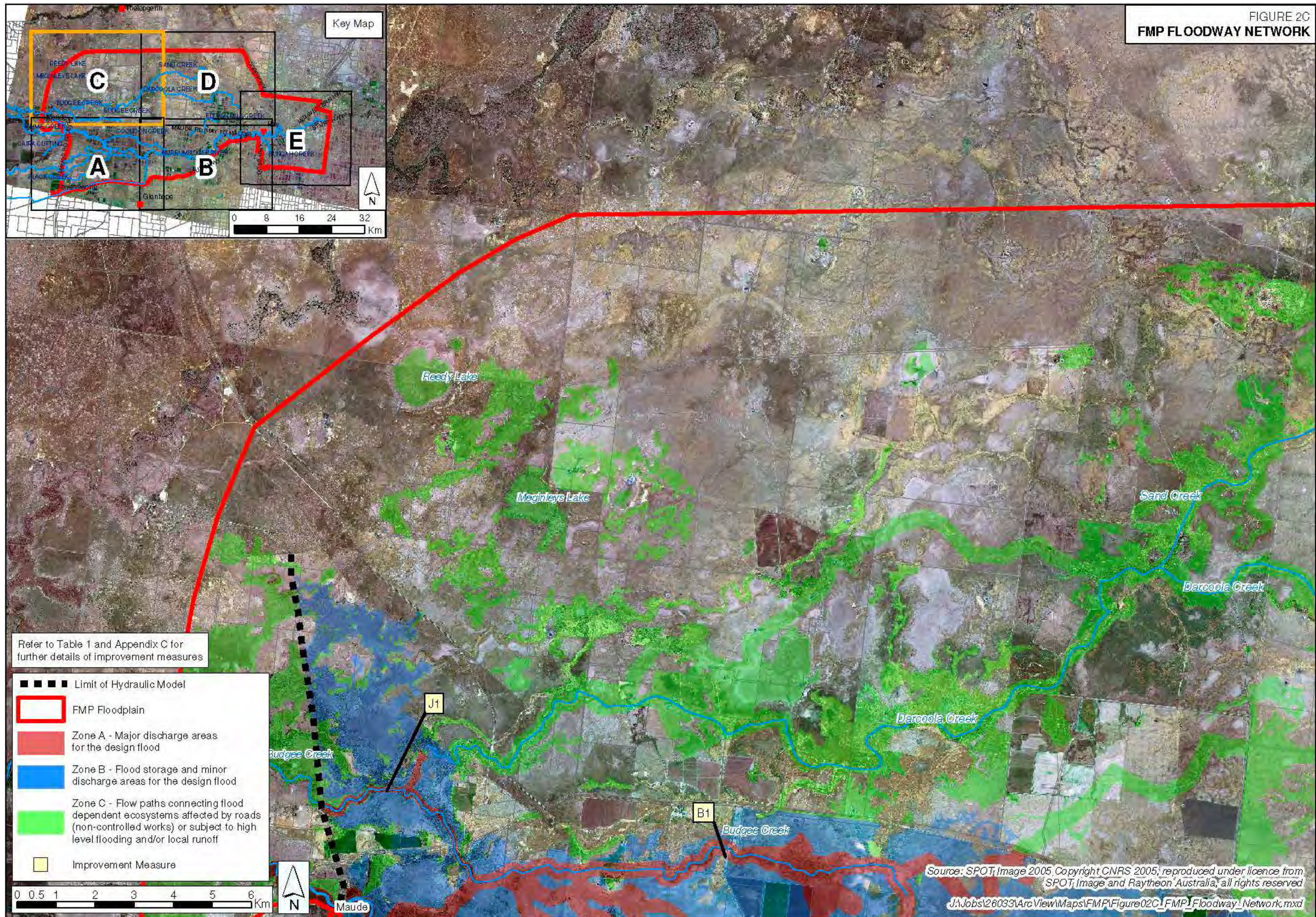


FIGURE 2C
FMP FLOODWAY NETWORK



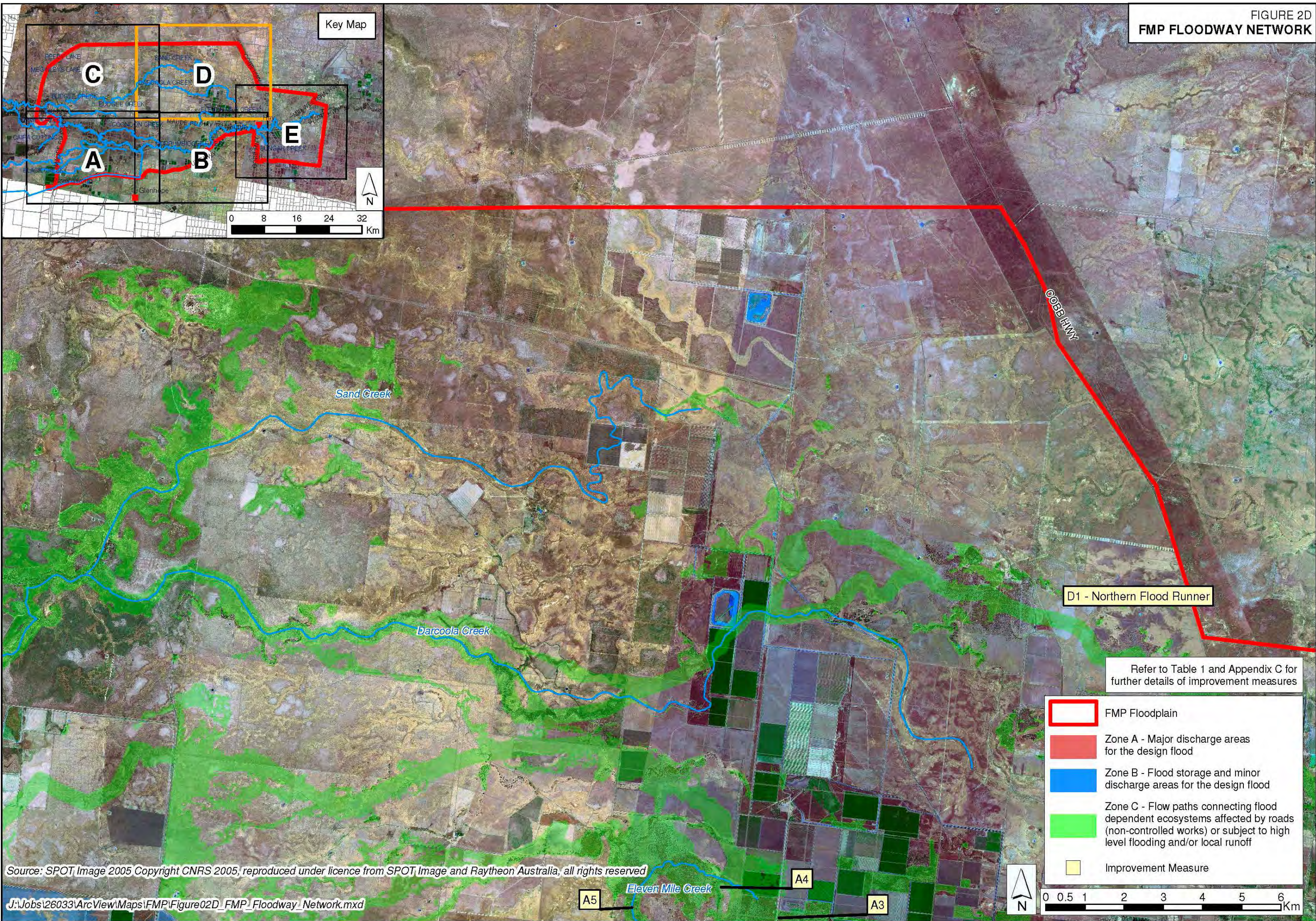
Refer to Table 1 and Appendix C for further details of improvement measures

- ■ ■ ■ Limit of Hydraulic Model
- ▭ FMP Floodplain
- ▭ Zone A - Major discharge areas for the design flood
- ▭ Zone B - Flood storage and minor discharge areas for the design flood
- ▭ Zone C - Flow paths connecting flood dependent ecosystems affected by roads (non-controlled works) or subject to high level flooding and/or local runoff
- ▭ Improvement Measure

0 0.5 1 2 3 4 5 6 Km

Source: SPOT Image 2005, Copyright CNRS 2005, reproduced under licence from SPOT Image and Raytheon Australia, all rights reserved
 J:\Jobs\26033\ArcView\Maps\FMP\Figure02C\FMP_Floodway_Network.mxd

FIGURE 2D
FMP FLOODWAY NETWORK



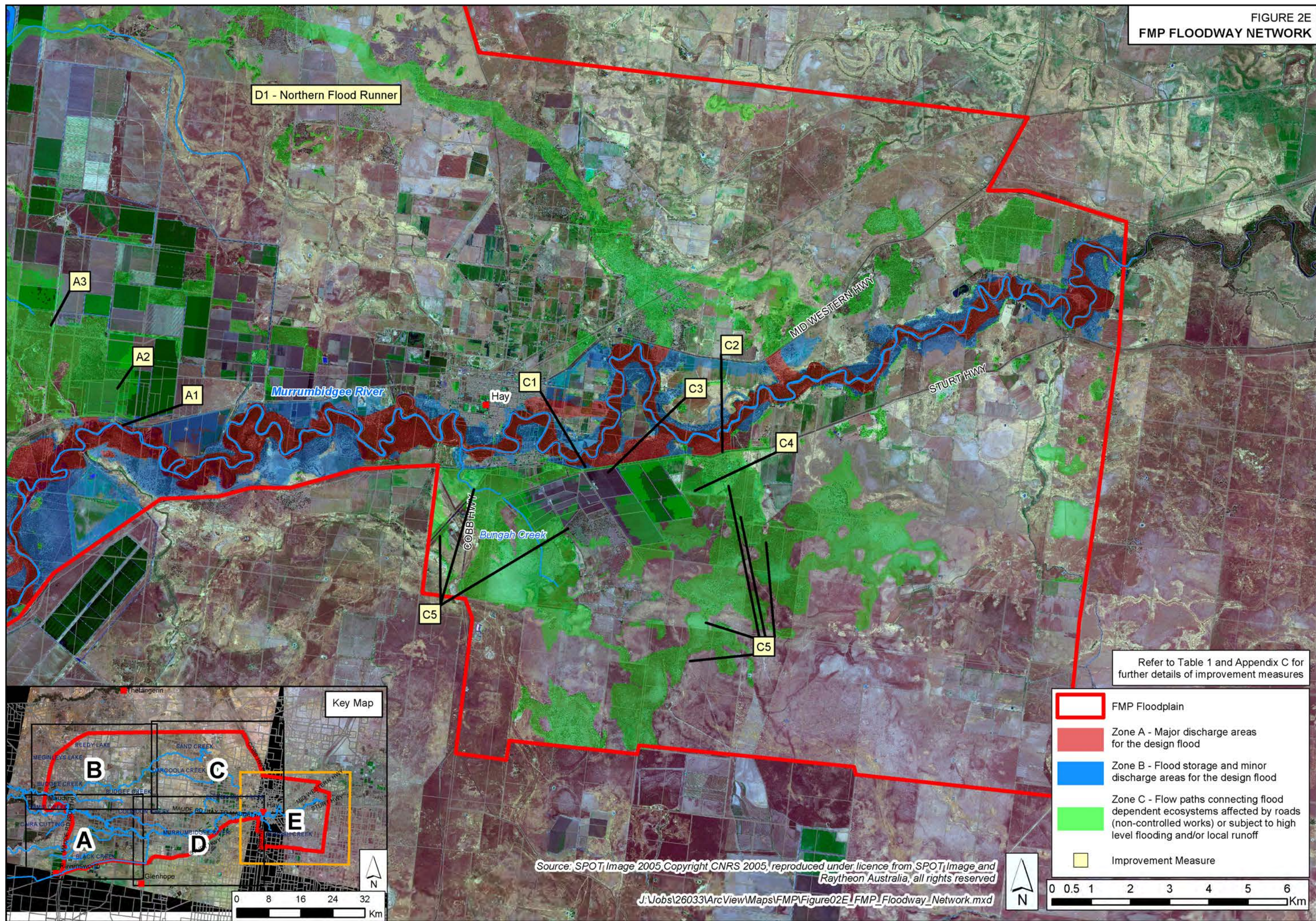
Source: SPOT Image 2005 Copyright CNRS 2005, reproduced under licence from SPOT Image and Raytheon Australia, all rights reserved

J:\Jobs\26033\ArcView\Maps\FMP\Figure02D_FMP_Floodway_Network.mxd

Refer to Table 1 and Appendix C for further details of improvement measures

- FMP Floodplain
- Zone A - Major discharge areas for the design flood
- Zone B - Flood storage and minor discharge areas for the design flood
- Zone C - Flow paths connecting flood dependent ecosystems affected by roads (non-controlled works) or subject to high level flooding and/or local runoff
- Improvement Measure

FIGURE 2E
FMP FLOODWAY NETWORK



Refer to Table 1 and Appendix C for further details of improvement measures

- FMP Floodplain
- Zone A - Major discharge areas for the design flood
- Zone B - Flood storage and minor discharge areas for the design flood
- Zone C - Flow paths connecting flood dependent ecosystems affected by roads (non-controlled works) or subject to high level flooding and/or local runoff
- Improvement Measure

Source: SPOT Image 2005 Copyright CNRS 2005, reproduced under licence from SPOT Image and Raytheon Australia, all rights reserved

J:\Jobs\26033\ArcView\Maps\FMP\Figure02E\FMP_Floodway_Network.mxd