

How to nominate your measurement period



Recap - Floodplain harvesting measurement period

Landholders must nominate the beginning and end of the measurement period – only time permitted to floodplain harvest

The Measurement Period **BEGINS** when overland flow:

- starts filling your storage, OR
- mixes with water on your property

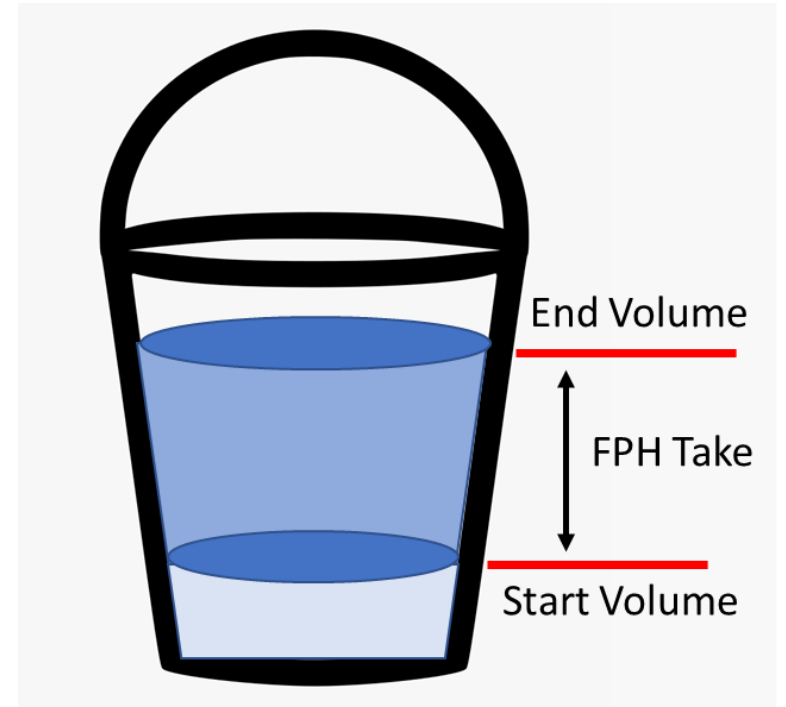
The Measurement Period **ENDS** when water is no longer flowing into your storage and all buffer zones are empty

Calculated:

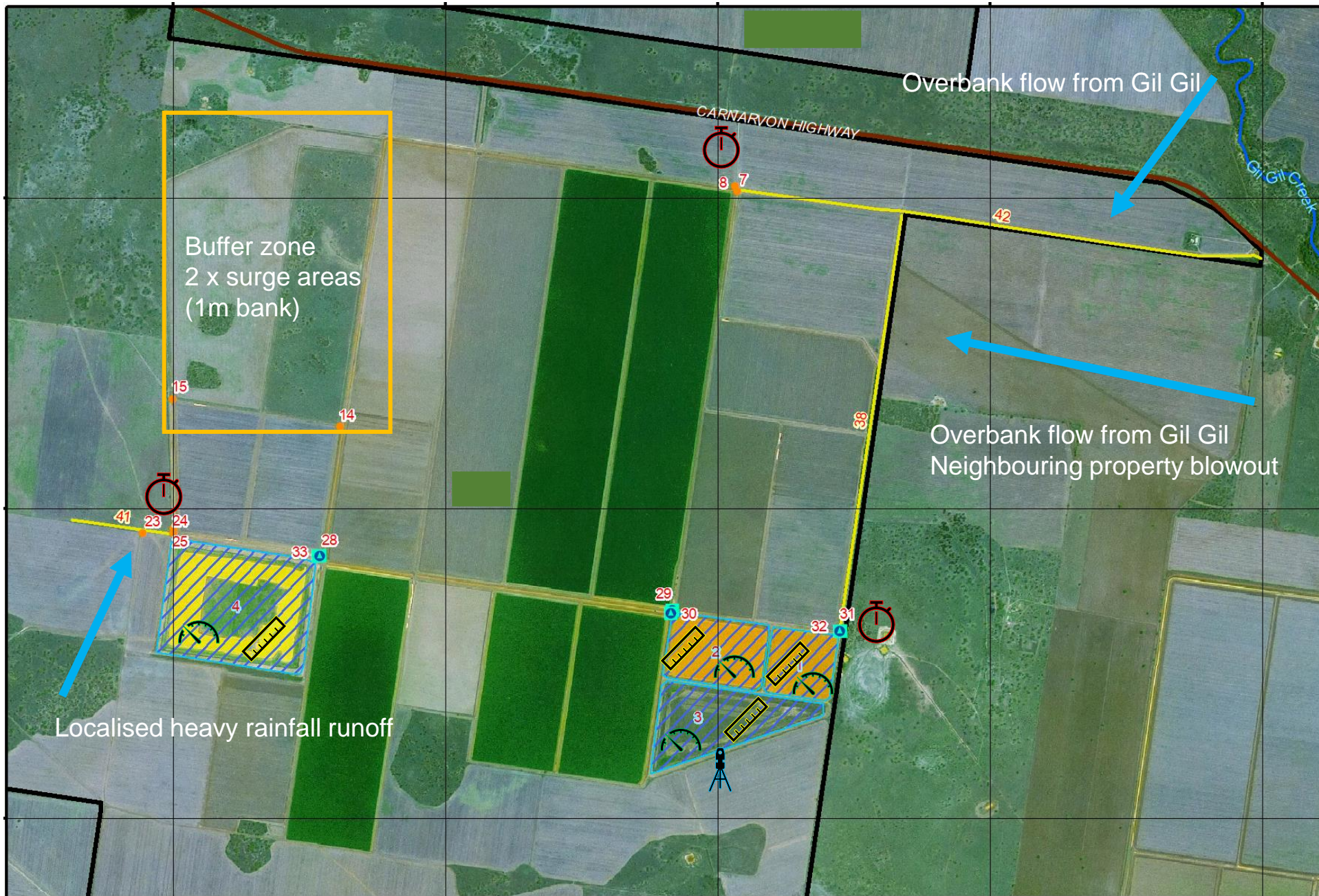
Sum of daily gross storage volume increase for all storages nominated on water supply work approval

minus

metered take under other licences put into storage during the measurement period.



Buffer zones are any field storages, surge areas or dams that are not metered.
It does not include supply channels.



Legend

Pipes



Pumps



Channels



Named water course



Roads

Major road

Minor road

On-Farm Storages



Primary metering equipment



Secondary metering equipment



Survey benchmark

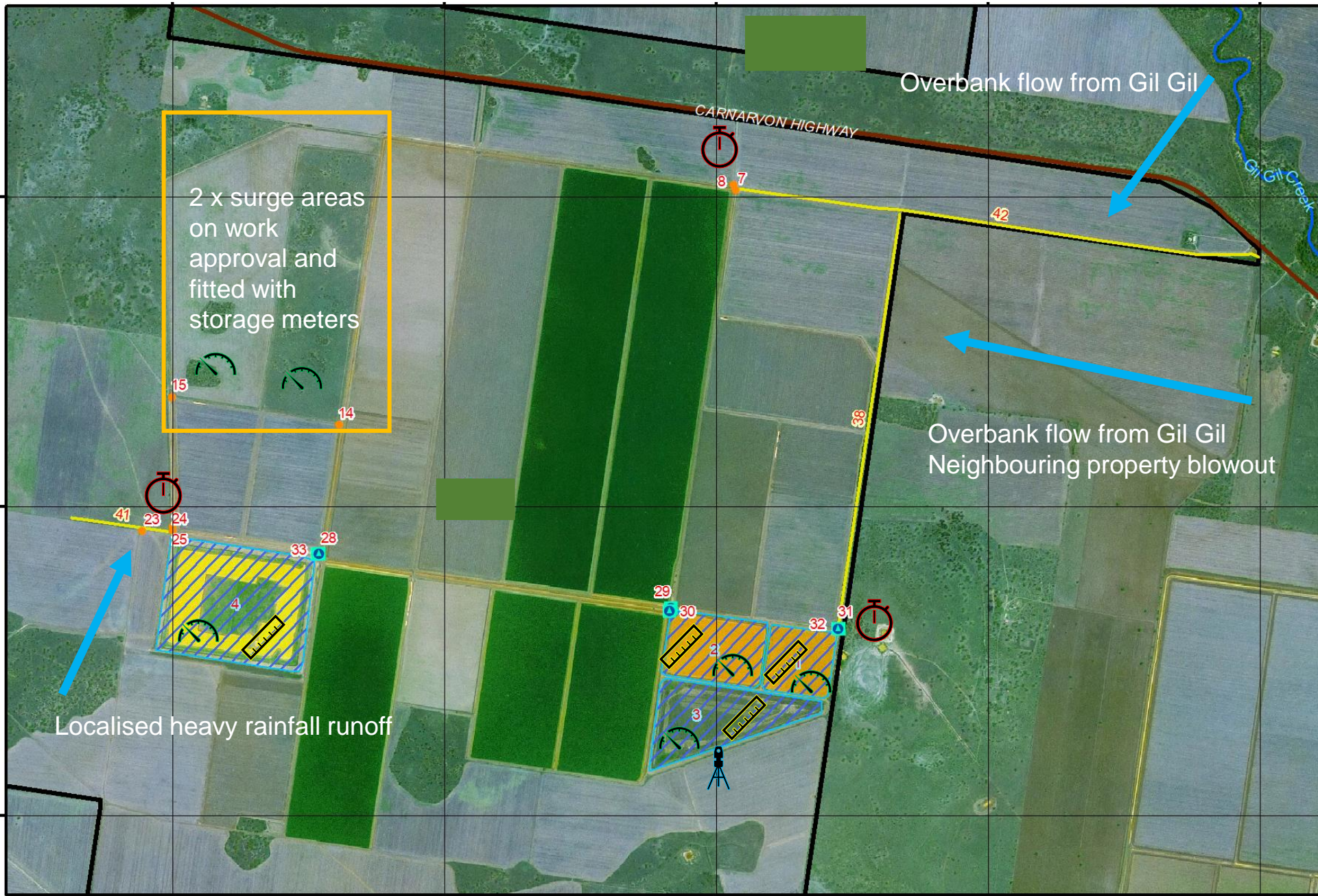


Measurement period

Starts:
Floodplain harvested water moves through pipes 7, 8, 23, 24 and 25 or pumps 31 or 32.

Ends:
All water in buffer zones already moved to another storage (1, 2, 3 or 4) and water is no longer being moved through pipes 7, 8, 23, 24 and 25 or pumps 31 or 32.

age
ifers
permitted
during a
measurement
period



Legend

Pipes



Pumps



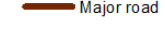
Channels



Named water course



Roads



On-Farm Storages



Primary metering equipment



Secondary metering equipment



Survey benchmark



Measurement period

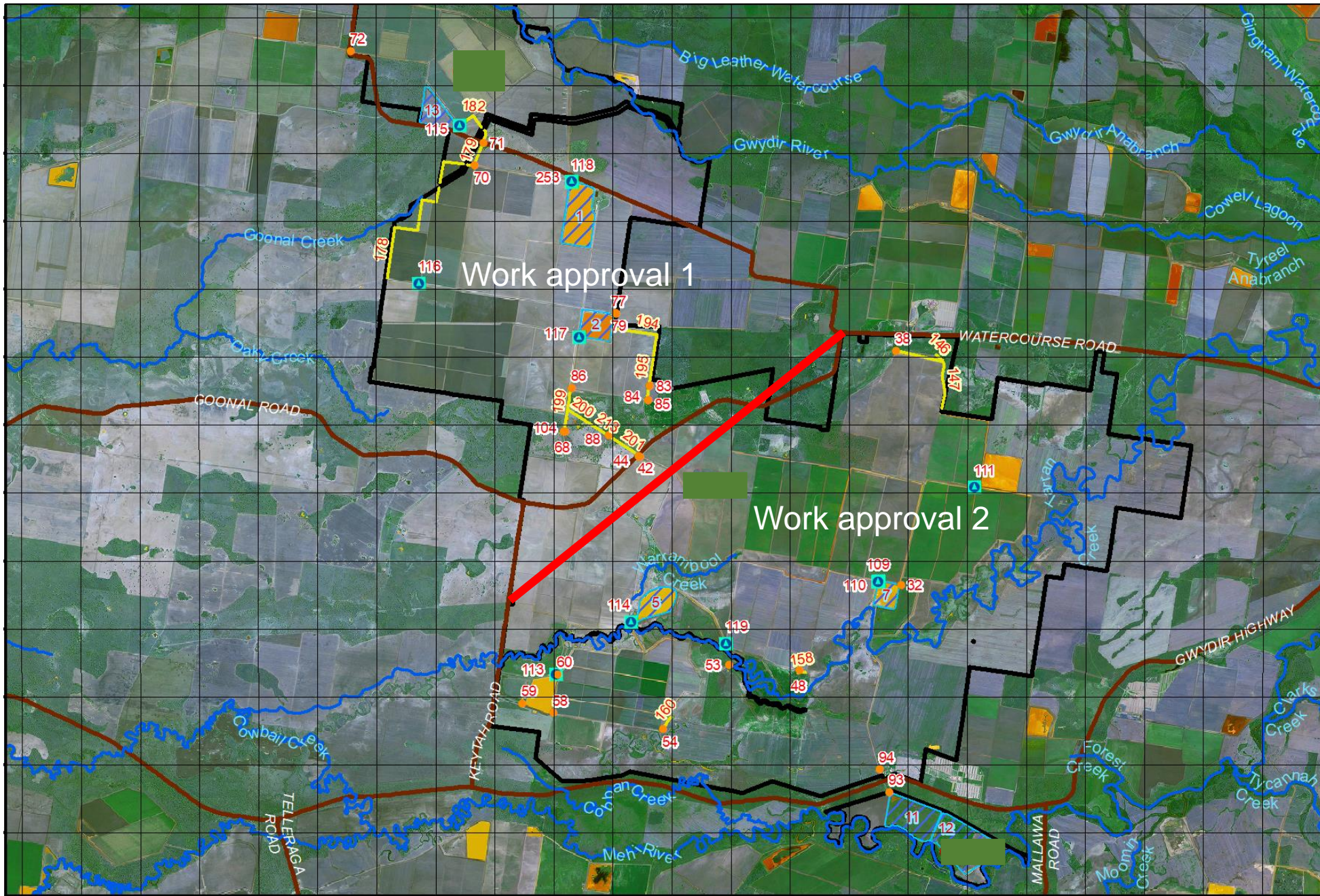
Starts:

Floodplain harvested water moves through pipes 7, 8, 15, 23, 24 and 25 or pumps 31 or 32.

Ends:

Water is no longer being moved through pipes 7, 8, 15, 23, 24 and 25 or pumps 31 or 32.

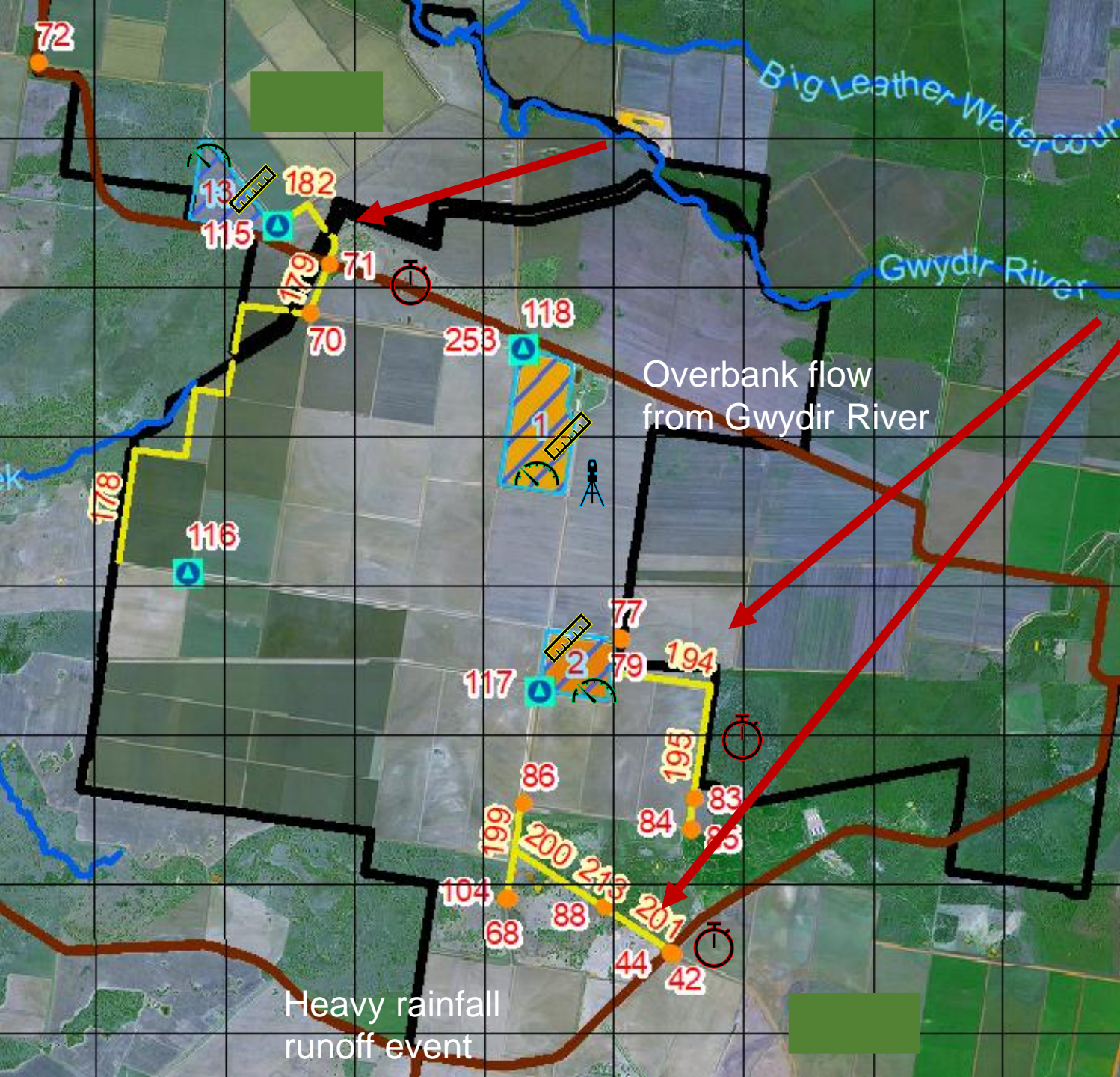
Wc



- Legend**
- Pipes ●
 - Pumps ■
 - Channels —
 - Named water course —
 - Roads —
 - On-Farm Storages ▨
 - Property Boundary □
 - Subdivide work approval into two

There must be controlling infrastructure between the two subdivided areas as it is an offence to move water from one subdivided area and another when any measurement period is in progress.

Work approval 1



Legend

Pipes



Pumps



Channels



Named water course



Roads

Major road

Minor road

On-Farm Storages



Property Boundary



Primary metering equipment



Secondary metering equipment



Survey benchmark



Measurement period

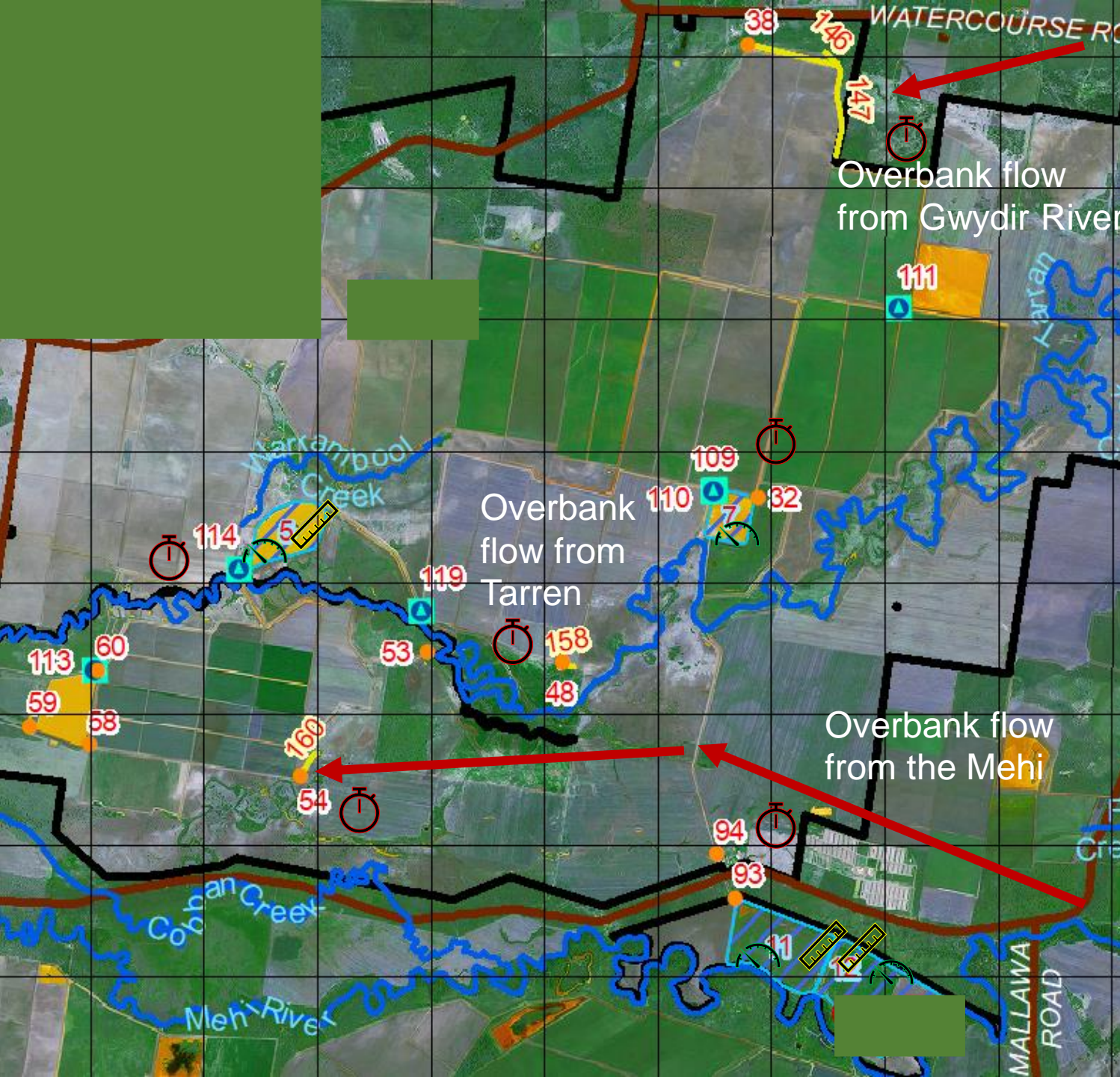
Starts:

Floodplain harvested water moves through any of the pipes or pumps on the work approval onto the property.

Ends:

No pumps or pipes are moving overland flow from external to the property to within the property (i.e. no moving water within the supply channels through any pumps or pipes).

Work approval 2



Legend

Pipes



Pumps



Channels



Named water course



Roads

Major road

Minor road

On-Farm Storages



Property Boundary



Primary metering equipment



Secondary metering equipment



Survey benchmark



Measurement period

Starts:

Floodplain harvested water moves through any of the pipes or pumps on the work approval onto the property.

Ends:

No pumps or pipes are moving overland flow from external to the property to within the property (i.e. no moving water within the supply channels through any pumps or pipes).

There are no buffer zones on this property.

What you need to know and demonstrate

Property measurement plans help you demonstrate and explain:

- How you floodplain harvest
- How you nominate the start and end of your measurement period
- location of primary metering equipment
- Location of secondary metering equipment
- Any subdivision of work approvals and differing measurement methods applied