

5 July 2024

Gwydir Regulated River Water Source

Water allocation update

General security (GS) licences in the Gwydir regulated river water source have received an **allocation of 1%** of their entitlement. Likewise, the Environmental Water Allowance (EWA) has been credited with the same ratio as per the water sharing plan rule.

Since the last assessment, rainfall has continued to elevate inflows above minimums and losses remain lower than the budgeted volume. This has yielded the allocation increment announced today. Inflows into Copeton Dam in June were 18.1 gigalitre (GL) and downstream tributary inflows added about another 3.0 GL to the system. Total essential supply demand was about 1 GL, and general security usage was approximately 1 GL. There were no EWA orders in June.

Water currently available to GS water users totals 469.7 GL, or an average 92% of entitlement. The Environmental Water Allowance (EWA) account balance is about 89 GL or about 199% full.

This resource assessment is based on information to 30 June 2024. Any changes in resources from this date will be captured in the next routine statement in August 2024.

Current GS allocation and EWA credit

5 July 2024	Increment	Average Account Balance
General security	1%	92%
EWA	1%	199%

Summary of the last water year (2023/24)

The last water year saw generally dry conditions causing Copeton active storage volumes to drop from 1,235 GL (nearly 90 % full) in July/August 2023 to 845 GL (62 % full) in March 2024 (the lowest for the year). Since then, the volume has risen to be about 881 GL (65 % full) at the end of June 2024.

General security users started the last water year (2023/24) with 726.4 GL in accounts. The first allocation of 0.03 ML/unit share occurred in August 2023. After that, there were five more allocation increments, with a closing balance of 460 GL or an average 90% of the entitlement in accounts.

Supplementary water access licence holders started the last water year with a maximum 1.00 ML/unit share allocation. Floodplain harvesting licenses were also allocated a maximum (100%) allocation.

General security and supplementary water usage was approximately 334 GL and 22.5 GL respectively in 2023/24.

Storage levels (as of 4 July 2024)

- Copeton Dam is about 66% full – holding 906 gigalitres (GL).

Climate and Streamflow Outlooks

The latest Bureau of Meteorology (BoM) seasonal outlook for July to September 2024 indicates rainfall in the Gwydir valley is likely to be above median. Daytime and overnight temperatures are expected to be above median over this period.

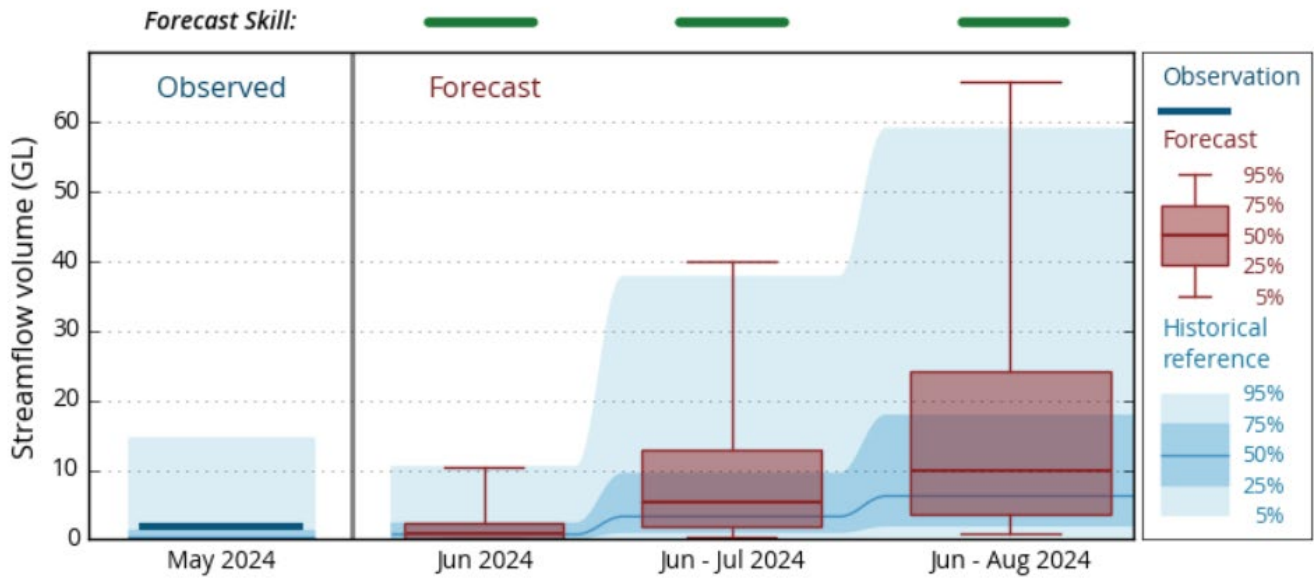
For further details: [Climate outlooks](#)

The Bureau of Meteorology issues a seasonal flow forecast for the Gwydir River at Yarrowyck, upstream of Copeton Dam (see the figure below). This may provide an indication of potential inflows into the dam in the coming months. All forecast quantiles of total flow volumes from June to August 2024 are higher than the historical flows indicating likely wetter condition than historical over this period. The graph for June to August 2024 is shown below, and updates can be found at:

<http://www.bom.gov.au/water/ssf/#id=418014>

Gwydir River at Yarrowyck (ID: 418014)

Forecast for Jun 2024 – Aug 2024



Generated: 20:34 05/06/2024 (ver. 2.9.0)

©Commonwealth of Australia 2024, Bureau of Meteorology

Resource Assessment Data Sheet

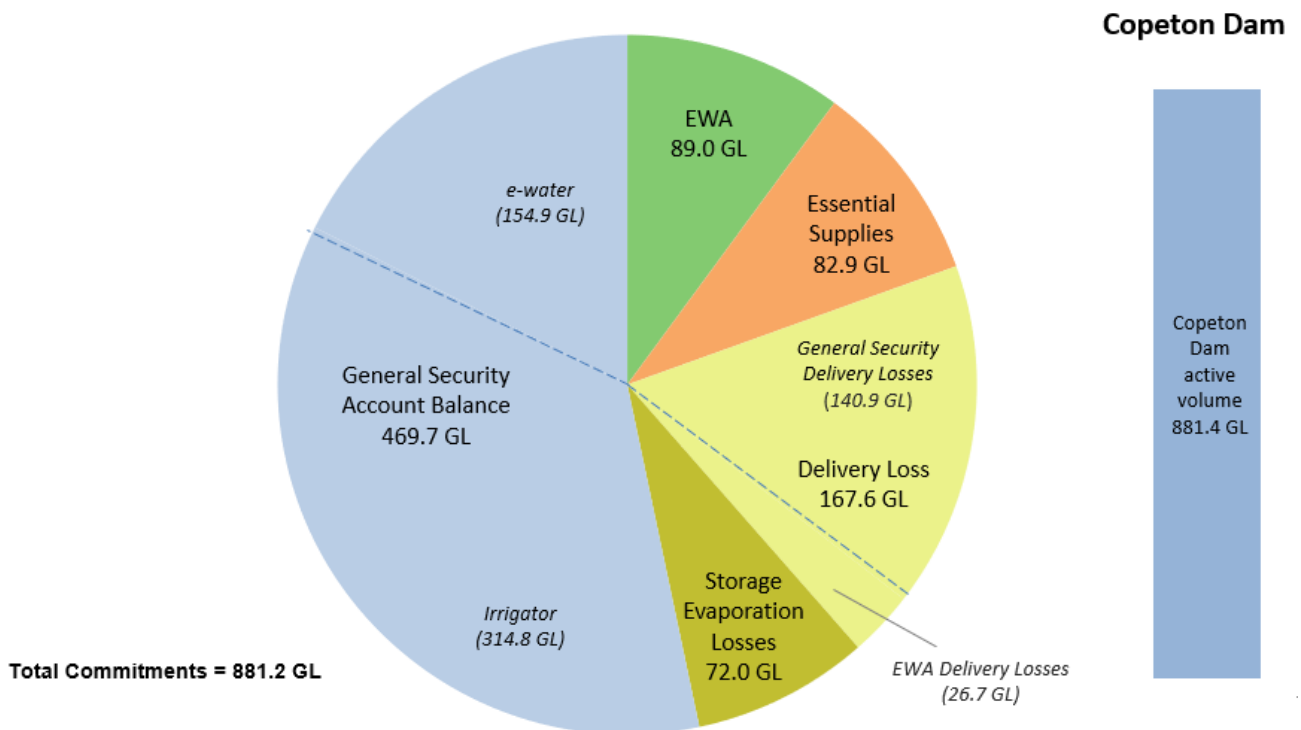
Resource distribution (as of 30 June 2024)	Volume (GL)
Copeton Dam active volume	881.4
<i>less</i>	
Storage Evaporation Losses ⁽¹⁾	72.0
Essential Supplies ⁽²⁾	82.9
Environmental Water Allowance (EWA)	89.0
Delivery Loss General Security ⁽³⁾	140.9
Delivery Loss EWA ⁽³⁾	26.7
General Security Held Environmental Water Account Balance ⁽⁴⁾	154.9
General Security Irrigator Account Balance	314.8
<i>Equals</i>	
Surplus ⁽⁵⁾	0.2

Notes:

- (1) Storage evaporation loss is based on projected storage depletion over the next 24 months and experiencing high evaporation of February 1918 to January 1920.
- (2) This reserve of essential supplies reflects water required under the water sharing plan to provide for local water utility, stock and domestic, high security and riverine environments for the next 24 months. It includes stock and domestic replenishments, delivery loss allowance, and end-of-system flow requirements. This is offset by the minimum inflow into Copeton recorded over February 1918 to January 1920.

- (3) This volume reflects the water needed to deliver general security and EWA water. Traditionally, a 30% delivery loss has been budgeted for this river system. See the table below on this statement for the actual volume remaining in the budget, which may be lower.
- (4) General security held environmental water (HEW) account balance is estimated to be 154.9 GL, and high security HEW account balance is estimated to be 5.76 GL. These entitlements are held and/or managed either singly or jointly by various environmental holder groups, including the NSW environment water holder and the Commonwealth Environmental Water Holder (CEWH).
- (5) The resource assessment returns a small surplus after allocation. This volume will be rolled over to next month's resource assessment.

Resource Distribution as at 30 June 2024 Gwydir Regulated River Water Source



Resource assessment as at 30 June 2024

Volumes in GL	Budget	Current	Additional	Balance
Storage Evaporation Loss	72.0	71.2	0.8	72.0
Essential Supplies for next 24 months	82.9	79.6	3.3	82.9
Delivery Loss EWA+GS (256 GL max)	167.6	164.5	3.1	167.6
Delivery Loss GS (229.0 GL max)	140.9	138.0	3.0	140.9
Delivery Loss EWA (27 GL max)	26.7	26.6	0.1	26.7
EWA (90 GL max)		88.5	0.5	89.0
General Security (764.5 GL max)		459.9	9.9	469.8

Uncommitted resources	17.6	-17.4	0.2
Total	881.4	0.0	881.4

General Security	Value	Unit
Incremental Increase CREDITED	9.9	GL
Available Water Determination	0.01	ML /unit share

Allocations and EWA credits in 2024/25

Date	Category	Increment	Total 2024/25	Account Balance
1-Jul	LWU, Domestic & Stock	100%	100%*	100%*
1-Jul	High Security	1.00 ML/unit share	1.00 ML/share*	100%*
1-Jul	Supplementary	1.00 ML/unit share	1.00 ML/unit share*	100%*
1-Jul	Floodplain harvesting	1.00 ML/unit share	1.00 ML/unit share*	100%*
5-Jul	General Security	0.01 ML/unit share	0.01 ML/unit share	92%
5-Jul	EWA	1%	1%	199%

* Maximum allowable.

Storage volume prediction

Storage outlook for the assessment horizon is provided below. It shows that with current commitments and an assumed repeat of historical minimum inflows and median inflows together with forecast demands, the volume in Copeton Dam will reduce to a minimum by the end of January 2026 after which recovery would be expected.

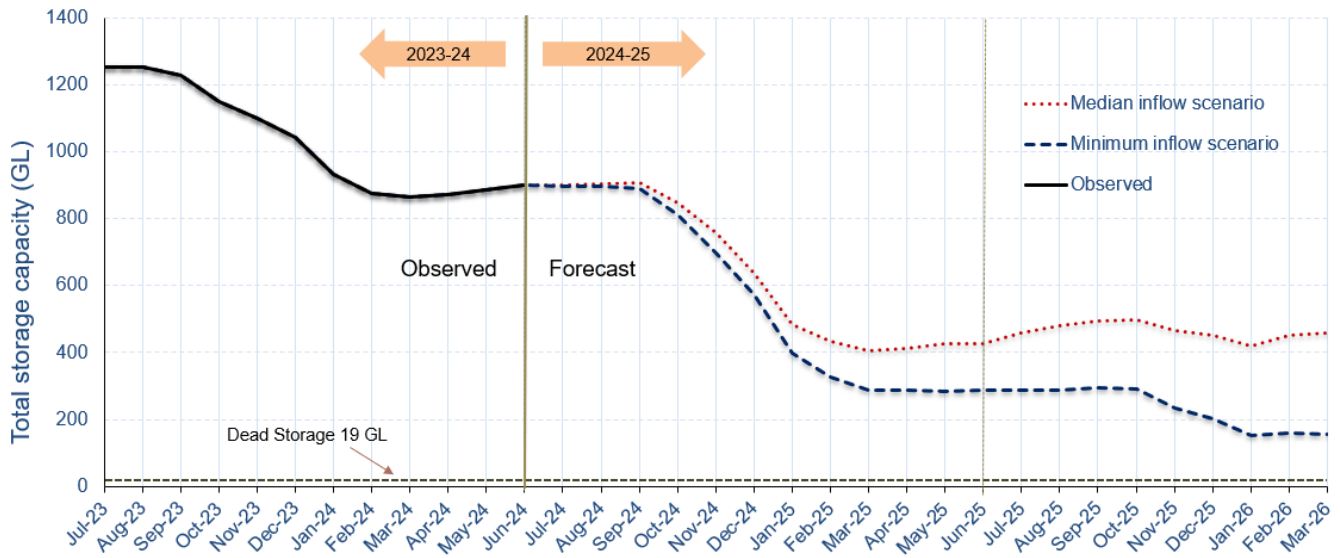


Figure: Simulated depletion of Copeton Dam storage volume

Water Allocation Guide

The NSW Department of Climate Change, Energy, the Environment and Water produced a series of guides to describe the water allocation methods for most NSW regulated river systems. The guide for this water source is available at the following link: <https://water.dpie.nsw.gov.au/our-work/allocations-availability/allocations/how-water-is-allocated/resource-assessment-process>

Further information

The next routine monthly water allocation statement for this water source will be published on **Wednesday 7 August 2024**.

Information on available water determinations and water sharing plans is available on the department’s website: [Water \(nsw.gov.au\)](https://www.nsw.gov.au/water).

Subscribe [here](#) to receive the Department of Climate Change, Energy, the Environment and Water’s monthly email update on water planning, management and reform in New South Wales.

You can also follow the Department on X: [@NSWDPIE_Water](https://twitter.com/NSWDPIE_Water)

Feedback on this work or any aspect of the Department’s service can be provided by the widget on the right at <https://www.nsw.gov.au/departments-and-agencies/dcceew>.