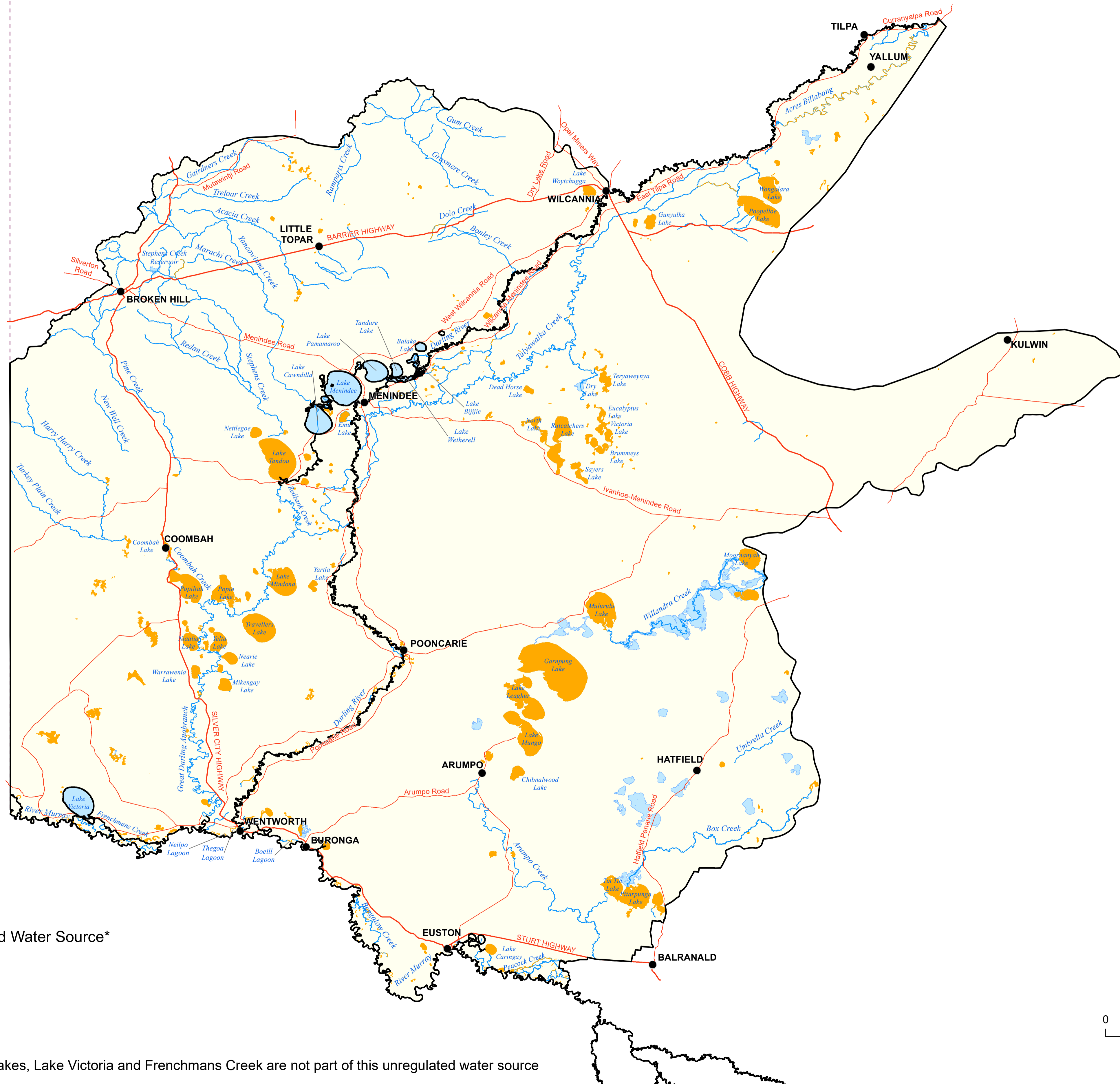


SIGNIFICANT WETLANDS MAP (WET005\_VERSION 1)

WATER SHARING PLAN FOR THE LOWER MURRAY-DARLING UNREGULATED RIVER WATER SOURCE 2024



**Legend**

- Town
- River / Creek
- Highway
- Road
- ▭ Water Sharing Plan Boundary
- ▭ Lower Murray-Darling Unregulated Water Source\*
- ▭ Lake
- - - NSW Boundary

**Wetland Category**

- ▭ Significant wetland

\*The Murray and Darling rivers, Menindee Lakes, Lake Victoria and Frenchmans Creek are not part of this unregulated water source

