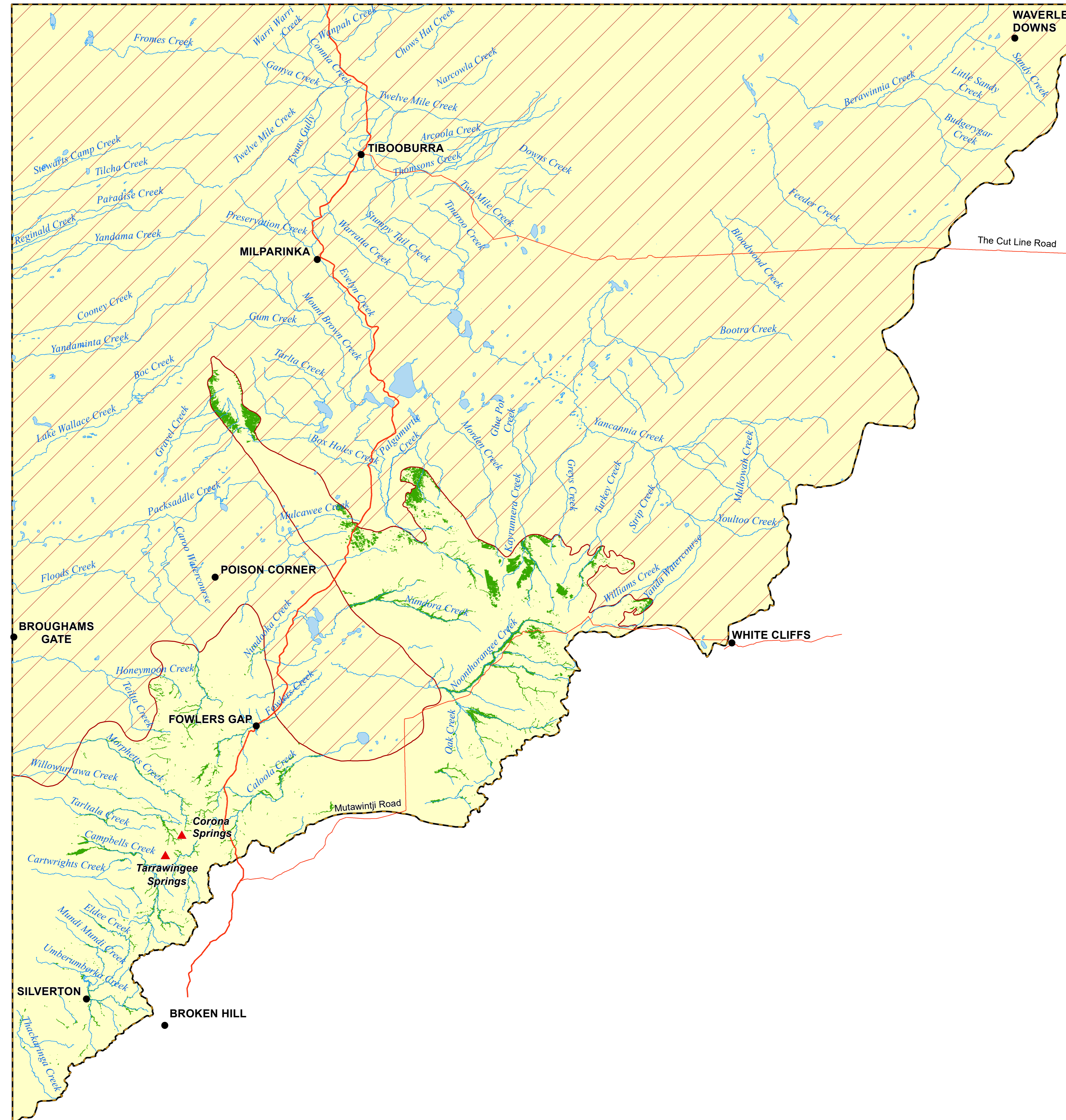


HIGH PRIORITY GROUNDWATER-DEPENDENT ECOSYSTEM MAP (GDE039\_Version 1)  
 WATER SHARING PLAN FOR THE NORTH WESTERN UNREGULATED AND FRACTURED ROCK WATER SOURCES 2024



- Legend**
- Town
  - ▲ Spring
  - River / Creek
  - Highway
  - Major Road
  - ▭ North Western Water Source (Surface water)
  - ▭ North Western Water Sharing Plan Boundary
  - ▭ North Western Fractured Rock Groundwater Source
  - ▭ Water Body
  - Buried portion of groundwater source**
  - ▭ North Western Fractured Rock Groundwater Source
  - High Priority Groundwater-Dependent Ecosystems**
  - ▭ Groundwater dependent vegetation ecosystem

