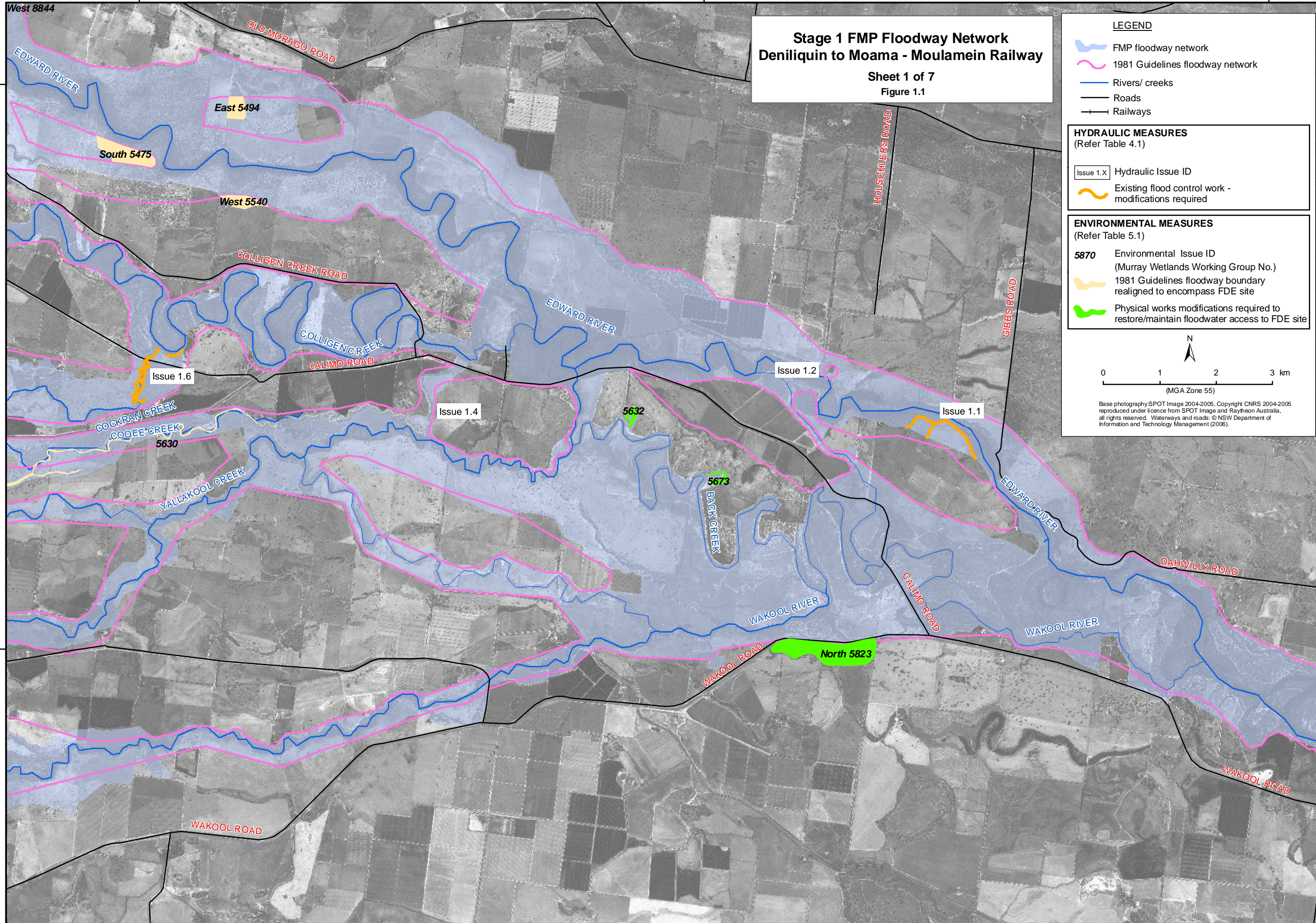


290000

300000

310000



**Stage 1 FMP Floodway Network
Deniliquin to Moama - Moulamein Railway**
Sheet 1 of 7
Figure 1.1

LEGEND

- FMP floodway network
- 1981 Guidelines floodway network
- Rivers/ creeks
- Roads
- Railways

HYDRAULIC MEASURES
(Refer Table 4.1)

- Issue 1.X Hydraulic Issue ID
- Existing flood control work - modifications required

ENVIRONMENTAL MEASURES
(Refer Table 5.1)

- 5870** Environmental Issue ID (Murray Wetlands Working Group No.)
- 1981 Guidelines floodway boundary realigned to encompass FDE site
- Physical works modifications required to restore/maintain floodwater access to FDE site

N

0 1 2 3 km
(MGA Zone 55)

Base photography: SPOT Image 2004-2005, Copyright CNRS 2004-2005 reproduced under licence from SPOT Image and Raytheon Australia, all rights reserved. Waterways and roads: © NSW Department of Information and Technology Management (2006).

290000

300000

310000