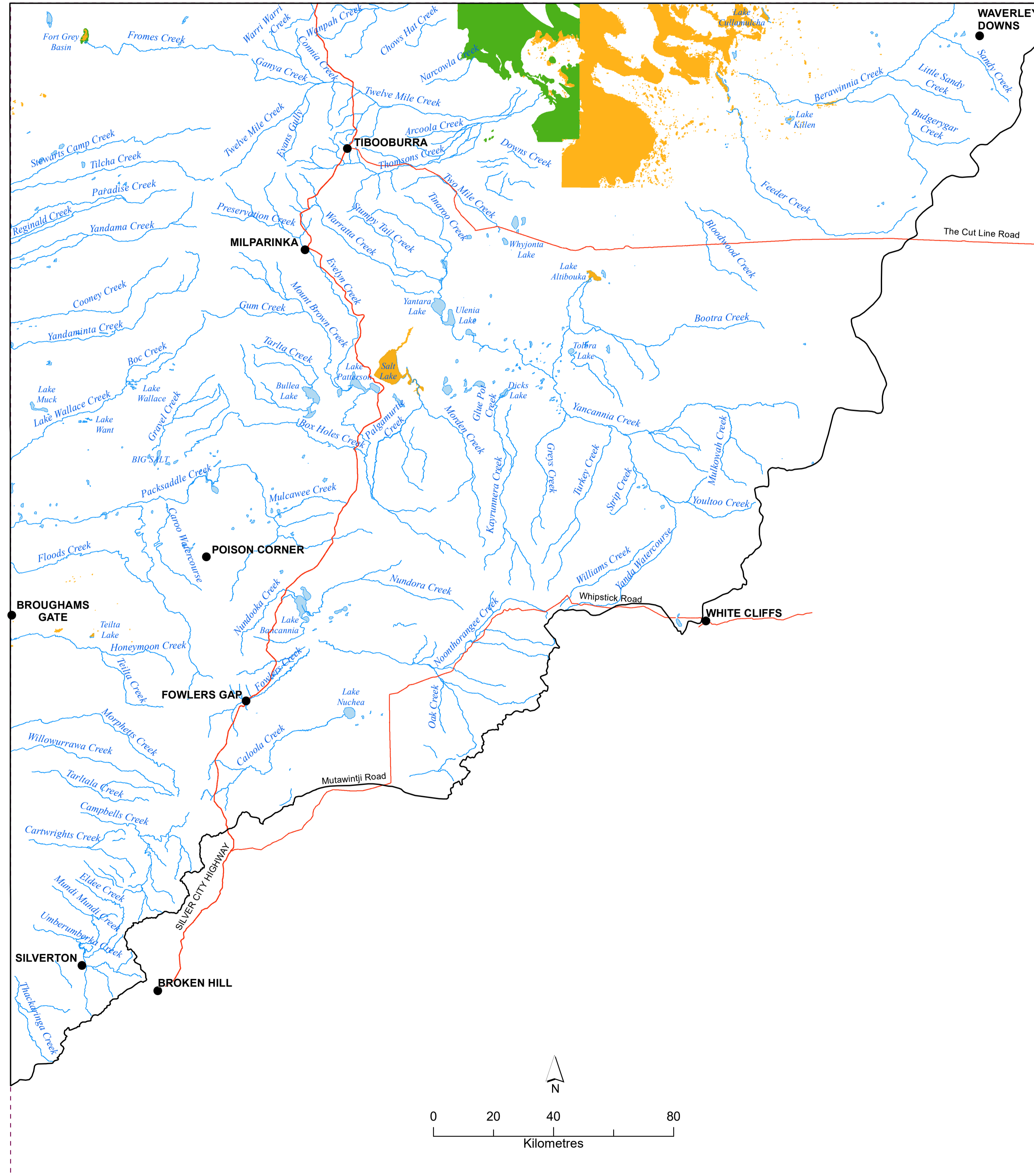
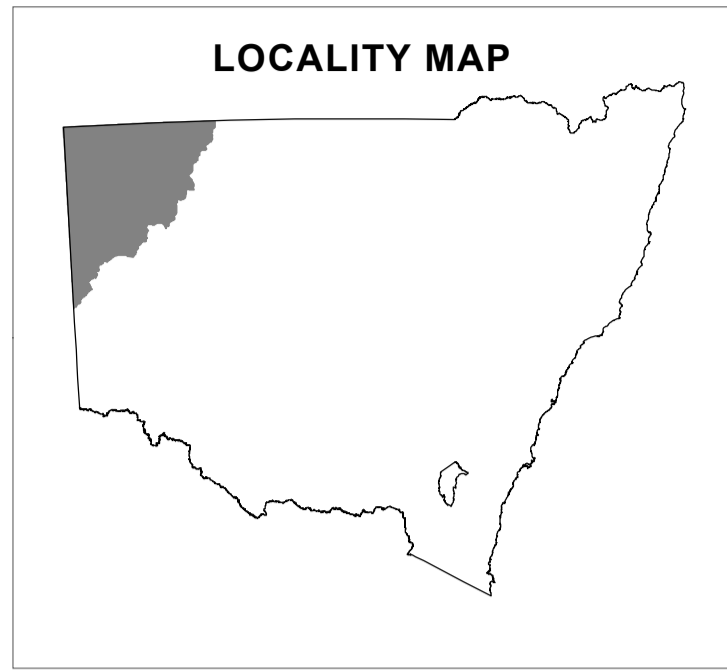


SIGNIFICANT WETLANDS MAP (WET001_Version 1)

WATER SHARING PLAN FOR THE NORTH WESTERN UNREGULATED AND FRACTURED ROCK WATER SOURCES 2024



Legend

- Town
- Highway
- Major Road
- River / Creek
- Water Body
- - - NSW Boundary
- North Western Water Source boundary

Wetland Category

- Ramsar wetland
- Significant wetland

