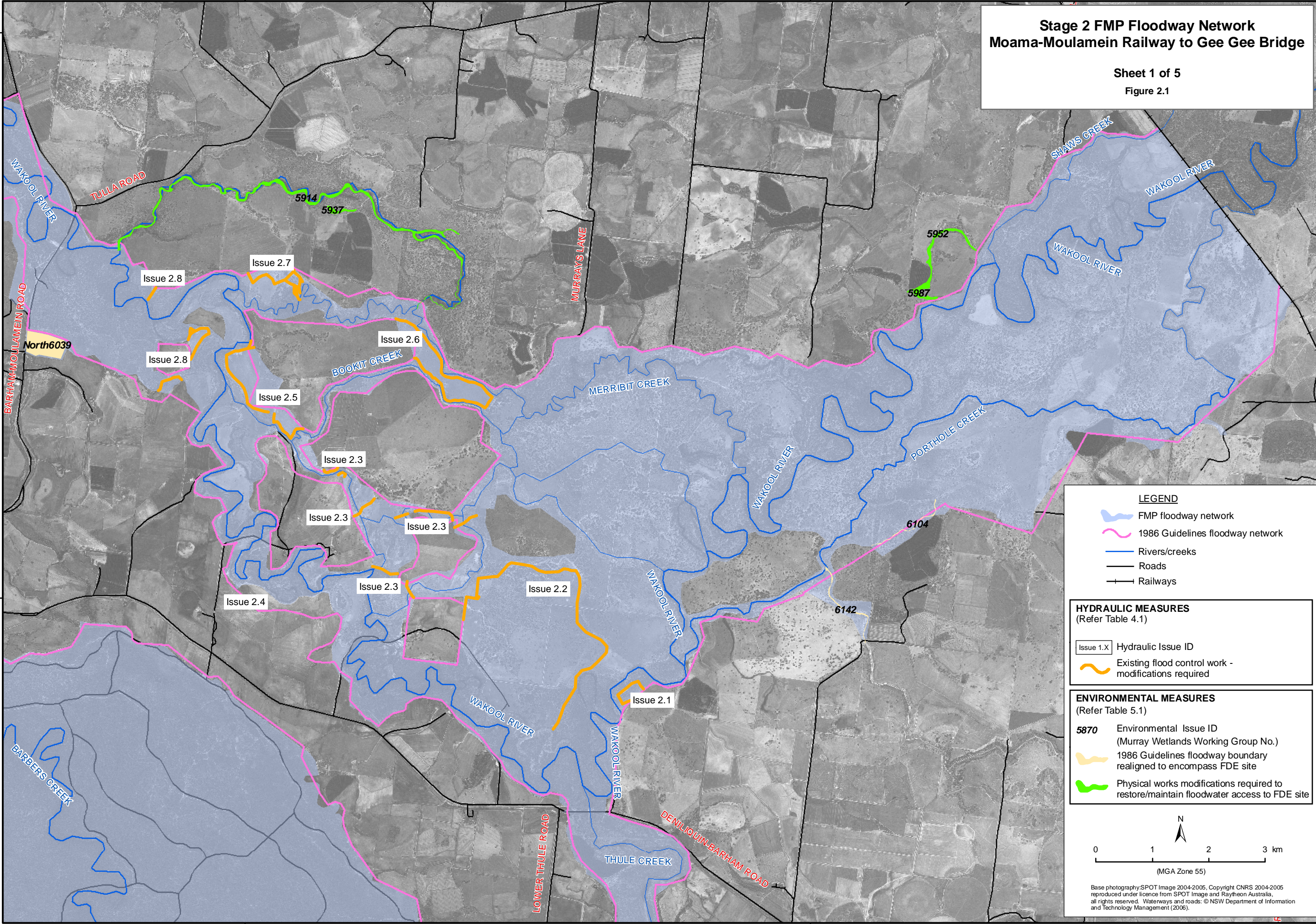


**Stage 2 FMP Floodway Network  
Moama-Moulamein Railway to Gee Gee Bridge**

Sheet 1 of 5  
Figure 2.1



**LEGEND**

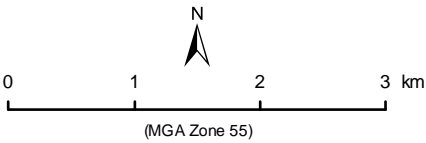
- FMP floodway network
- 1986 Guidelines floodway network
- Rivers/creeks
- Roads
- Railways

**HYDRAULIC MEASURES**  
(Refer Table 4.1)

- Issue 1.X Hydraulic Issue ID
- Existing flood control work - modifications required

**ENVIRONMENTAL MEASURES**  
(Refer Table 5.1)

- 5870** Environmental Issue ID (Murray Wetlands Working Group No.)
- 1986 Guidelines floodway boundary realigned to encompass FDE site
- Physical works modifications required to restore/maintain floodwater access to FDE site



Base photography: SPOT Image 2004-2005, Copyright CNRS 2004-2005 reproduced under licence from SPOT Image and Raytheon Australia, all rights reserved. Waterways and roads: © NSW Department of Information and Technology Management (2006).