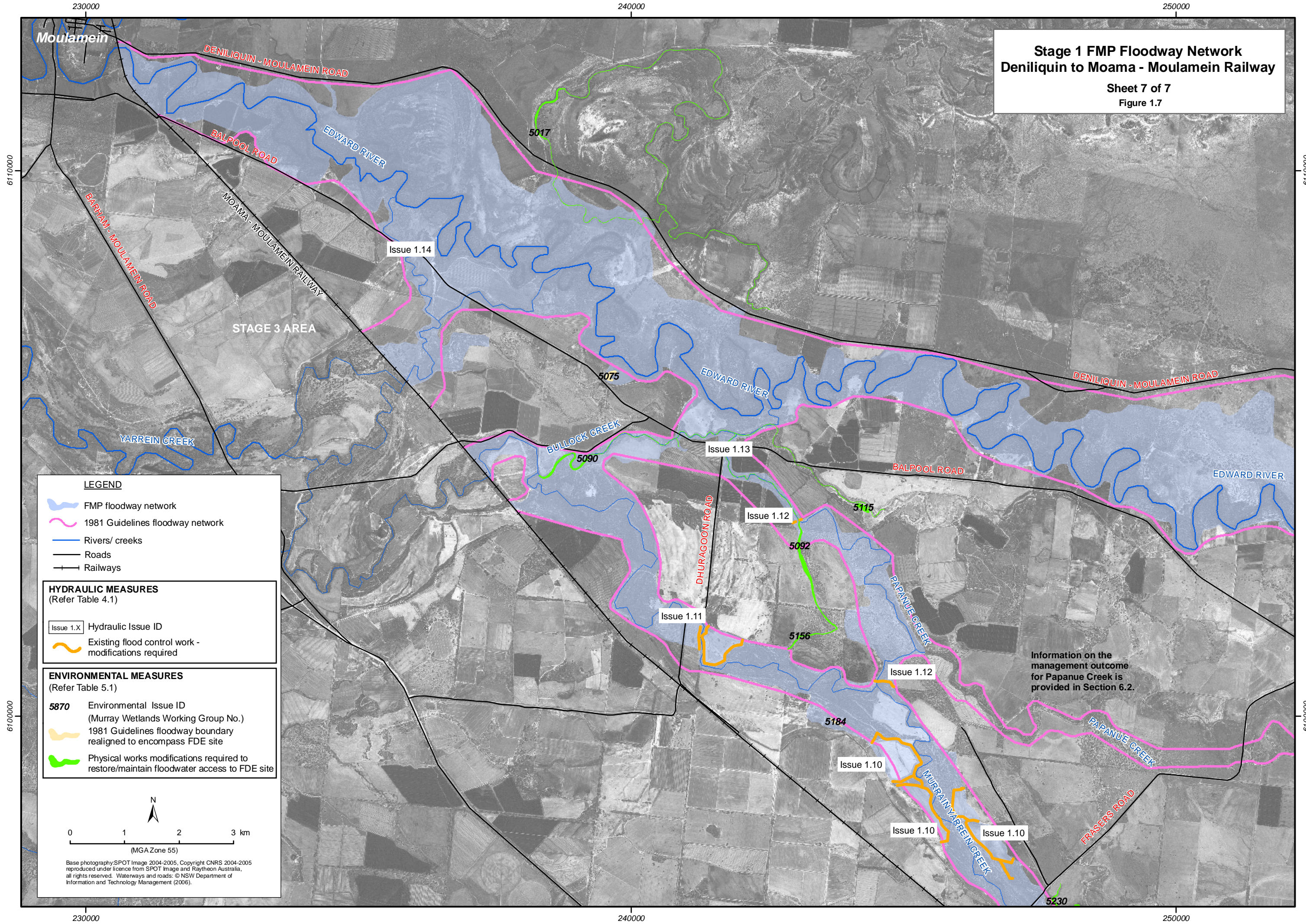


**Stage 1 FMP Floodway Network**  
**Deniliquin to Moama - Moulamein Railway**  
 Sheet 7 of 7  
 Figure 1.7



**LEGEND**

- FMP floodway network
- 1981 Guidelines floodway network
- Rivers/ creeks
- Roads
- Railways

**HYDRAULIC MEASURES**  
 (Refer Table 4.1)

Issue 1.X Hydraulic Issue ID

Existing flood control work - modifications required

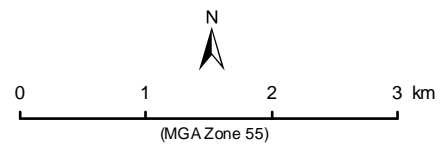
**ENVIRONMENTAL MEASURES**  
 (Refer Table 5.1)

5870 Environmental Issue ID (Murray Wetlands Working Group No.)

1981 Guidelines floodway boundary realigned to encompass FDE site

Physical works modifications required to restore/maintain floodwater access to FDE site

Information on the management outcome for Papanue Creek is provided in Section 6.2.



Base photography: SPOT Image 2004-2005, Copyright CNRS 2004-2005 reproduced under licence from SPOT Image and Raytheon Australia, all rights reserved. Waterways and roads: © NSW Department of Information and Technology Management (2006).