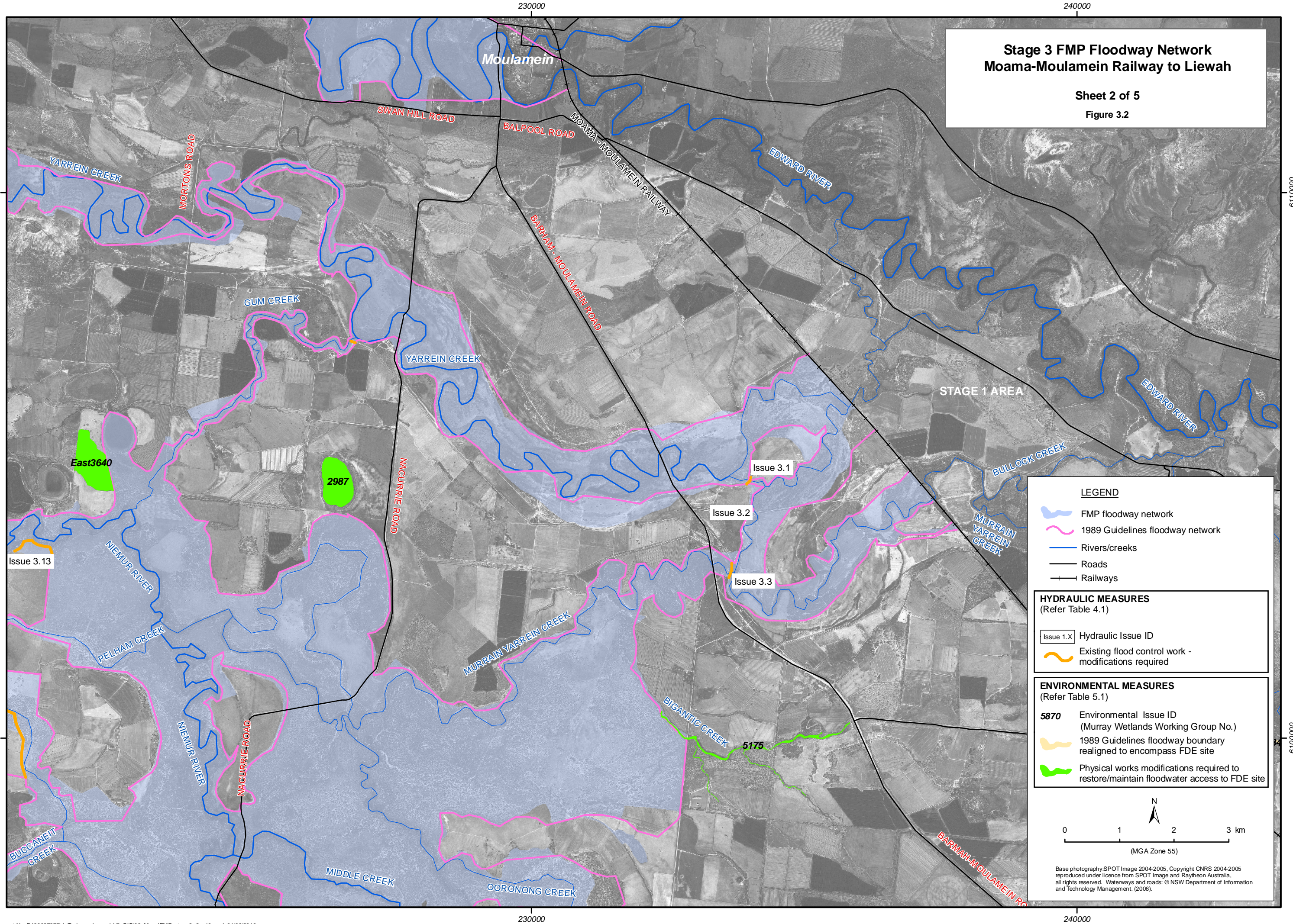


**Stage 3 FMP Floodway Network  
Moama-Moulamein Railway to Liewah**

Sheet 2 of 5  
Figure 3.2



**LEGEND**

- FMP floodway network
- 1989 Guidelines floodway network
- Rivers/creeks
- Roads
- Railways

---

**HYDRAULIC MEASURES**  
(Refer Table 4.1)

- Issue 1.X Hydraulic Issue ID
- Existing flood control work - modifications required

---

**ENVIRONMENTAL MEASURES**  
(Refer Table 5.1)

- 5870** Environmental Issue ID (Murray Wetlands Working Group No.)
- 1989 Guidelines floodway boundary realigned to encompass FDE site
- Physical works modifications required to restore/maintain floodwater access to FDE site

---

N

0 1 2 3 km  
(MGA Zone 55)

Base photography: SPOT Image 2004-2005, Copyright CNRS 2004-2005 reproduced under licence from SPOT Image and Raytheon Australia, all rights reserved. Waterways and roads: © NSW Department of Information and Technology Management, (2006).