

210000

220000

230000

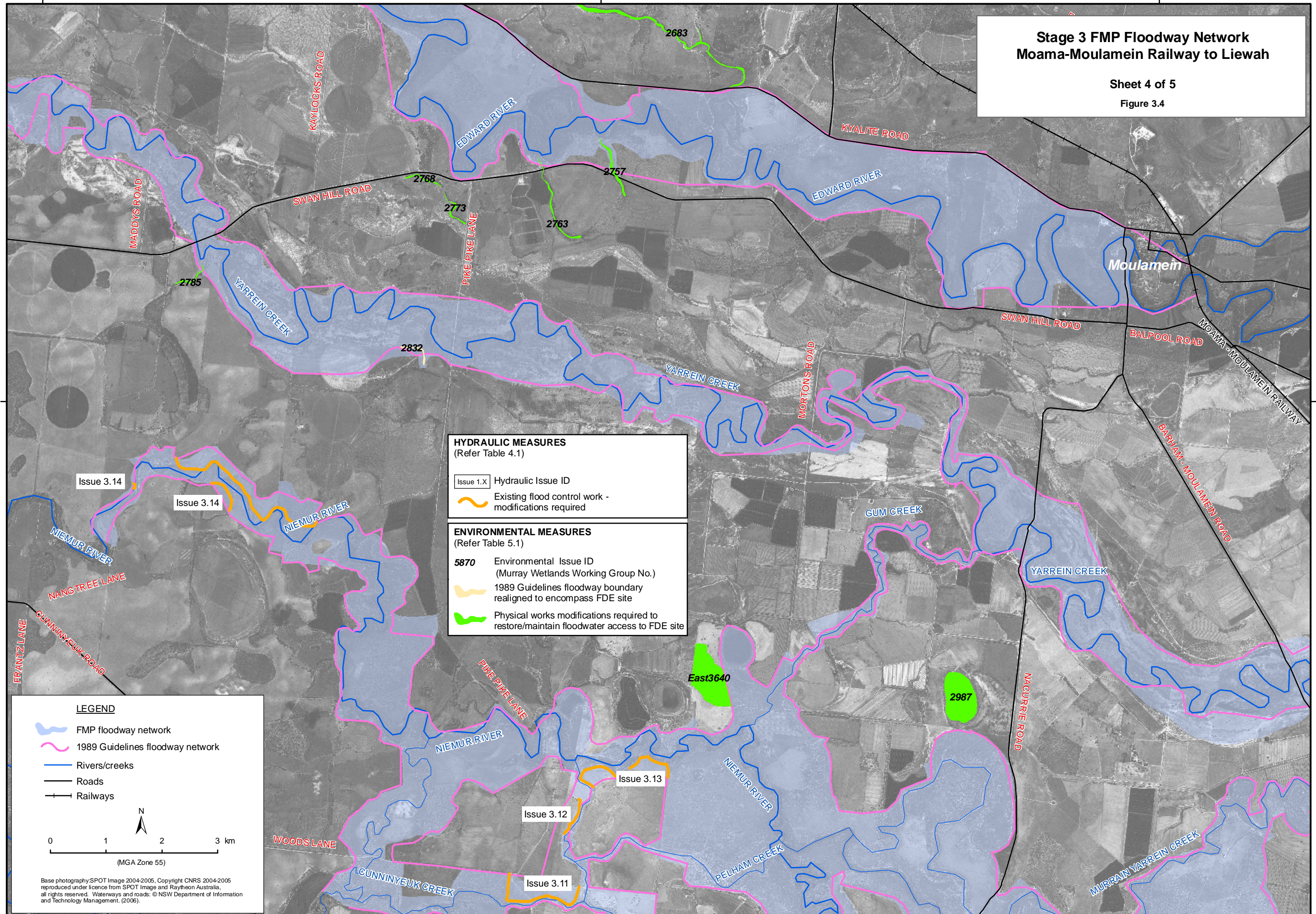
# Stage 3 FMP Floodway Network Moama-Moulamein Railway to Liewah

Sheet 4 of 5

Figure 3.4

6110000

6110000



**HYDRAULIC MEASURES**  
(Refer Table 4.1)

Issue 1.X Hydraulic Issue ID

Existing flood control work - modifications required

---

**ENVIRONMENTAL MEASURES**  
(Refer Table 5.1)

5870 Environmental Issue ID (Murray Wetlands Working Group No.)

1989 Guidelines floodway boundary realigned to encompass FDE site

Physical works modifications required to restore/maintain floodwater access to FDE site

**LEGEND**

- FMP floodway network
- 1989 Guidelines floodway network
- Rivers/creeks
- Roads
- Railways

0 1 2 3 km  
(MGA Zone 55)

Base photography: SPOT Image 2004-2005. Copyright CNRS 2004-2005 reproduced under licence from SPOT Image and Raytheon Australia, all rights reserved. Waterways and roads: © NSW Department of Information and Technology Management, (2006).

210000

220000

230000