

- Legend**
- | Flood Model Result - Velocity (m/s)
 - | FMP Floodway Network
 - | Flood Model Result - Flow (m³/s)
 - Rivers/Creeks
 - Approved Levees
 - Digital Cadastral Database
 - ➔ Flow direction

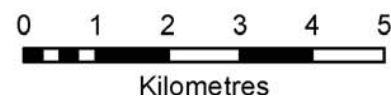
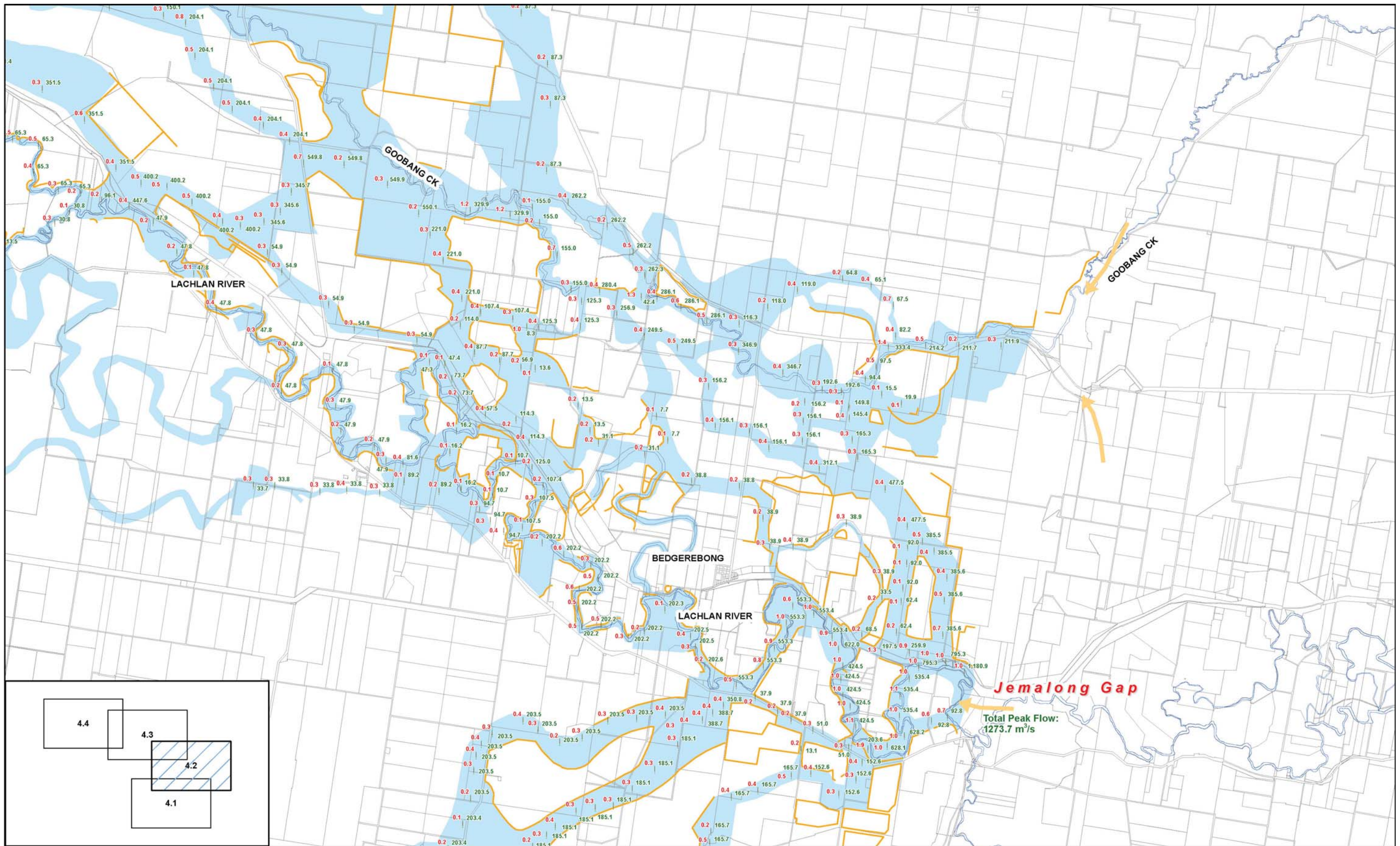


Figure 4.1
1990 Flood Model Results
(Flows and velocities)

Lachlan River Jemalong Gap to
Condobolin FMP

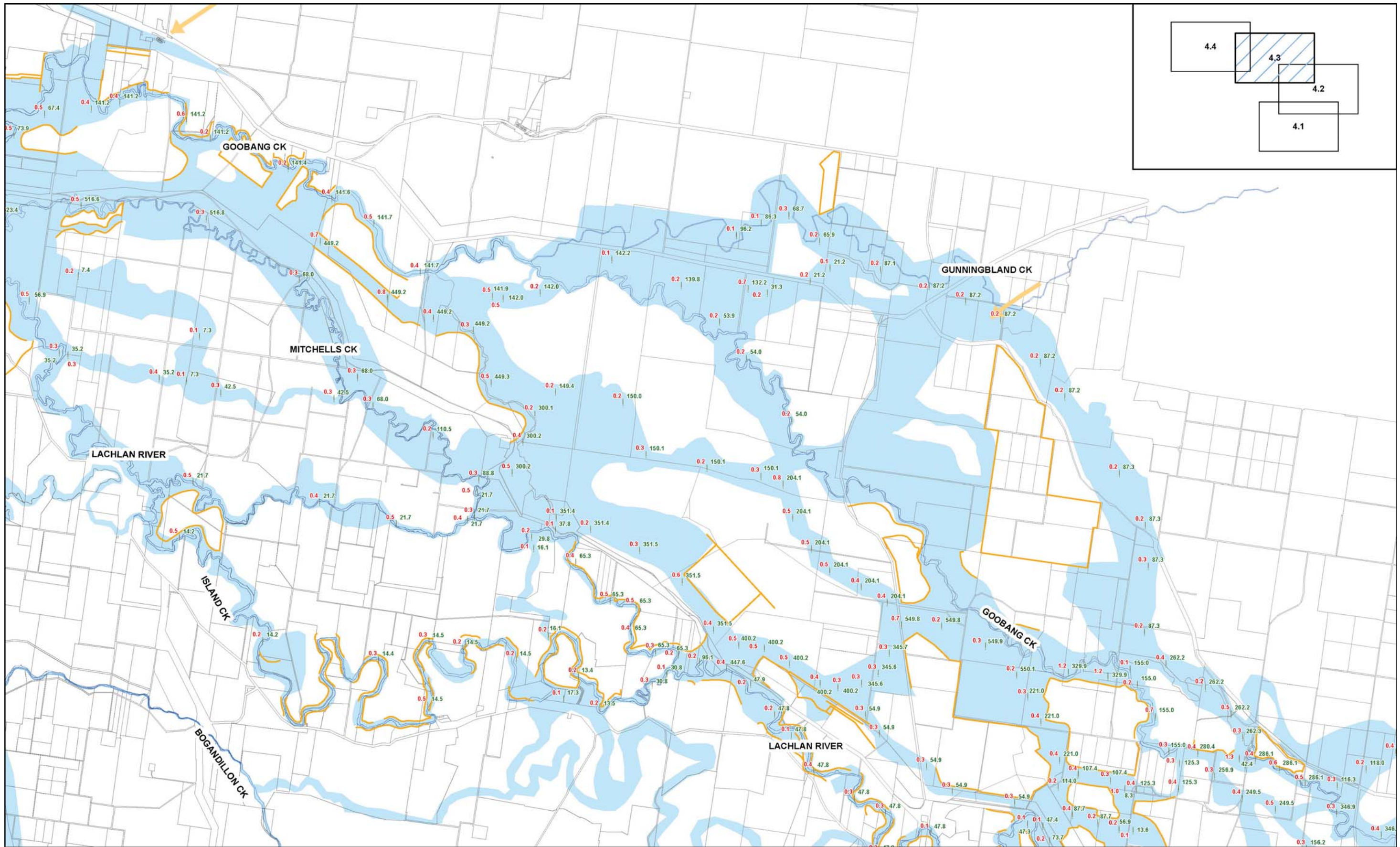


- Legend**
- Flood Model Result - Velocity (m/s)
 - Flood Model Result - Flow (m³/s)
 - Approved Levees
 - Flow direction
 - FMP Floodway Network
 - Rivers/Creeks
 - Digital Cadastral Database

0 1 2 3 4 5
Kilometres

Figure 4.2
1990 Flood Model Results
(Flows and velocities)

Lachlan River Jemalong Gap to
Condobolin FMP



- Legend**
- Flood Model Result - Velocity (m/s)
 - Flood Model Result - Flow (m³/s)
 - Approved Levees
 - ➔ Flow direction
 - FMP Floodway Network
 - Rivers/Creeks
 - Digital Cadastral Database

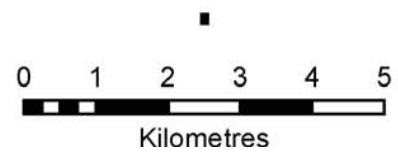
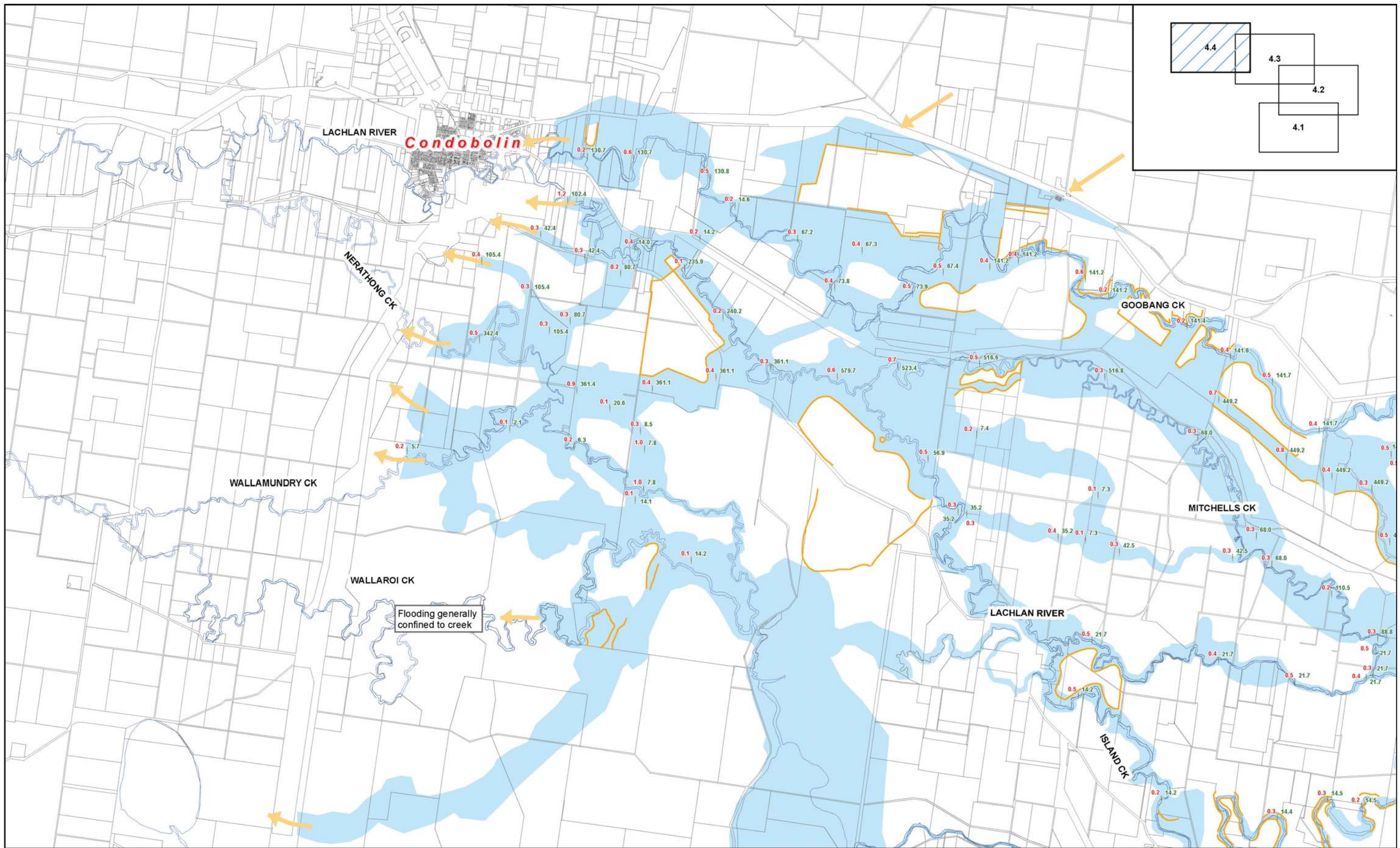


Figure 4.3
1990 Flood Model Results
(Flows and velocities)

Lachlan River Jemalong Gap to
Condobolin FMP



- Legend**
- | Flood Model Result - Velocity (m/s)
 - █ FMP Floodway Network
 - | Flood Model Result - Flow (m³/s)
 - Rivers/Creeks
 - Approved Levees
 - Digital Cadastral Database
 - ➔ Flow direction

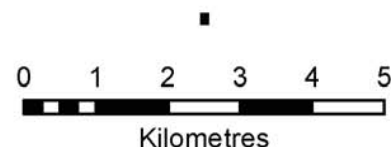


Figure 4.4
1990 Flood Model Results
(Flows and velocities)

Lachlan River Jemalong Gap to
Condobolin FMP